

**PRELIMINARY OFFICIAL STATEMENT DATED MAY 25, 2000**

**Ratings: Moody's: MIG 1  
Standard & Poor's: SP-1+  
See "Ratings" herein**

**NEW ISSUE**

**BOND ANTICIPATION NOTES**

*In the opinion of Bond Counsel, based on existing statutes and court decisions and assuming continuing compliance with certain covenants and procedures relating to requirements of the Internal Revenue Code of 1986, as amended, (the "Code"), interest on the Notes is excluded from gross income for federal income tax purposes and is not treated as an item of tax preference for purposes of computing the federal alternative minimum tax. Interest on the Notes may be includable in the calculation of certain taxes under the Code, including the alternative minimum tax on certain corporation, as described under "Tax Exemption" herein. In the opinion of Bond Counsel, based on existing statutes, interest on the Notes is excluded from Connecticut taxable income for purposes of the Connecticut income tax on individuals, trusts and estates, and is excluded from amounts on which the net Connecticut minimum tax is based in the case of individuals, trusts and estates required to pay the federal alternative minimum tax.*



**CITY OF STAMFORD, CONNECTICUT**

**\$35,000,000**

**GENERAL OBLIGATION BOND ANTICIPATION NOTES  
BOOK-ENTRY-ONLY**

**Dated: June 20, 2000**

**Due: May 2, 2001**

The Notes will be general obligations of the City of Stamford, Connecticut, and the City will pledge its full faith and credit to pay the principal of an interest on the Notes when due. (See "Security and Remedies" herein).

The Notes will be issued in fully registered form and will bear interest at such rate or rates per annum as specified by the successful bidder in accordance with the Notice of Sale dated May 25, 2000. The Notes when issued, will be registered in the name of Cede & Co., as Noteowner and nominee for The Depository Trust company ("DTC"), New York, New York. See "Book-Entry-Only System" herein.

The Notes are not subject to redemption prior to maturity.

Electronic bids or sealed bids for the Notes will be received until 12:00 noon (E.D.T.) on Tuesday June 6, 2000, at the Stamford office of Robinson & Cole LLP, 695 East Main Street, 5<sup>th</sup> Floor, Connecticut Conference Room, Stamford, CT 06904.

This Official Statement is in a form "deemed final" by the City for the purpose of Securities and Exchange Commission Rule 15c2-12(b)(1).

-----  
*The Notes are offered for delivery when, as and if issued, subject to the approving opinion of Robinson & Cole LLP, Bond Counsel. It is expected that delivery of the Notes in book-entry form will be made on or about June 20, 2000.*

**This Preliminary Official Statement and the information contained herein are subject to completion and amendment. Under no circumstances shall this Preliminary Official Statement constitute an offer to sell or a solicitation of an offer to buy, nor shall there be any sale of the Notes in any jurisdiction in which such offer, solicitation or sale would be unlawful prior to registration or qualification under the securities laws of such jurisdiction.**

## OFFICIAL STATEMENT

### CITY OF STAMFORD, CONNECTICUT

**\$35,000,000**

### **GENERAL OBLIGATION BOND ANTICIPATION NOTES (BOOK ENTRY ONLY)**

#### INTRODUCTION

This Official Statement, including the cover page and appendices, is provided for the purpose of presenting certain information relating to the City of Stamford, Connecticut (the "City"), in connection with the issuance and sale of \$35,000,000 General Obligation Bond Anticipation Notes (the "Notes").

The information in this Official Statement has been prepared by the City. Public Financial Management, Inc., Boston, Massachusetts and New York, New York, financial advisor to the City, has assisted in the preparation of the Official Statement.

Other than as to matters expressly set forth herein as the opinion of Bond Counsel, Bond Counsel are not passing on and do not assume any responsibility for the accuracy or adequacy of the statements made in this Official Statement and makes no representation that they have independently verified the same.

All quotations from the summaries and explanations of provisions of statutes, charters, or other laws and acts and proceedings of the City contained herein do not purport to be complete and are qualified in their entirety by reference to the original official documents; and all references to the Notes and the proceedings of the City relating thereto are qualified in their entirety by reference to the definitive form of the Notes and such proceedings.

The presentation of information is intended to show recent historical trends and is not intended to indicate future or continuing trends in the financial or other areas presented herein as provided by the City.

Certain factors that may affect an investment decision concerning the Notes are described throughout this Official Statement. Persons considering a purchase of the Notes should read this Official Statement in its entirety.

#### THE NOTES

##### **Authorization and Purpose**

**Authorization** - The Notes are issued pursuant to Title 7 of the General Statutes of Connecticut, as amended, the Charter of the City of Stamford and resolutions adopted by the Board of Finance and the Board of Representatives of the City.

**Purpose** - Proceeds of the Notes will be used to provide a new money borrowing for various capital improvement projects authorized in capital budgets of the City and for which bonds are authorized to be issued. The specific projects to be financed will be based upon construction progress. As of June 1, 2000, the City has \$61,374,698 of authorized and unissued debt. The capital budget for fiscal year 2000-2001 authorizes an additional \$28,995,530 of capital improvement projects which will be financed through the issuance of debt.

##### **Description of the Notes**

The Notes will be are general obligations of the City of Stamford and are described in the Notice of Sale dated May 25, 2000. See Appendix D herein. The Notes will be dated June 20, 2000 and mature on May 2, 2001. The Notes are not subject to redemption prior to maturity and will bear interest calculated on the basis of 30-day months and a

360-day year. A book-entry system will be employed evidencing ownership of the Notes in the principal amounts of \$1,000 or integral multiples thereof, with transfers of ownership effected on the records of The Depository Trust Company, New York, New York, (“DTC”), and its participants pursuant to the rules and procedures established by DTC and its participants. See “Book-Entry-Only System” herein.

The Certifying Agent, Paying Agent, Registrar and Transfer Agent will be State Street Bank and Trust Company of Connecticut, N.A.. Robinson & Cole LLP, Bond Counsel, will render the legal opinion on the Notes in substantially the form set forth in Appendix B to this Official Statement. The Notes are being issued to finance various capital projects of the City as described under “Authorization and Purpose” herein. The Notes shall NOT be designated by the City as qualified tax-exempt obligations under the provisions of Section 265(b) of the Internal Revenue Code of 1986, as amended, for purposes of the deduction by financial institutions for interest expense allocable to the Notes. The Notes will be separately rated from the long-term bonds of the City. See “Bond Ratings” herein.

### **Book-Entry-Only System**

The Depository Trust Company (“DTC”), New York, New York will act as securities depository for the Notes. The Notes will be issued as fully-registered securities registered in the name of Cede & Co. (DTC’s partnership nominee). One fully-registered Note certificate will be issued in the aggregate principal amount of the sole maturity, and will be deposited with DTC.

DTC is a limited-purpose trust company organized under the New York Banking Law, a “banking organization” within the meaning of the New York Banking Law, a member of the Federal Reserve System, a “clearing corporation” within the meaning of the New York Uniform Commercial Code, and a “clearing agency” registered pursuant to the provisions of Section 17A of the Securities Exchange Act of 1934. DTC holds securities that its participants (“Participants”) deposit with DTC. DTC also facilitates the settlement among Participants of securities transactions, such as transfers and pledges, in deposited securities through electronic computerized book-entry changes in Participants’ accounts, thereby eliminating the need for physical movement of securities certificates. Direct Participants include securities brokers and dealers, banks, trust companies, clearing corporations, and certain other organizations. DTC is owned by a number of its Direct Participants and by the New York Stock Exchange, Inc., the American Stock Exchange, Inc., and the National Association of Securities Dealers, Inc. Access to the DTC system is also available to others such as securities brokers and dealers, banks, and trust companies that clear through or maintain a custodial relationship with a Direct Participant, either directly or indirectly (“Indirect Participants”). The Rules applicable to DTC and its participants are on file with the Securities and Exchange Commission.

Purchases of securities under the DTC system must be made by or through Direct Participants, which will receive a credit for the securities on DTC’s records. The ownership interest of each actual purchaser of each security (“Beneficial Owner”) is in turn to be recorded on the Direct and Indirect Participants’ records. Beneficial Owners will not receive written confirmation from DTC of their purchase, but Beneficial Owners are expected to receive written confirmations providing details of the transaction, as well as periodic statements of their holdings, from the Direct or Indirect Participant through which the Beneficial Owner entered into the transaction. Transfers of ownership interests in the securities are to be accomplished by entries made on the books of Participants acting on behalf of Beneficial Owners. Beneficial Owners will not receive certificates representing their ownership interests in securities, except in the event that use of the book-entry system for the securities is discontinued.

To facilitate subsequent transfers, all securities deposited by Participants with DTC are registered in the name of DTC’s partnership nominee, Cede & Co. The deposit of securities with DTC and their registration in the name of Cede & Co. effect no change in beneficial ownership. DTC has no knowledge of the actual Beneficial Owners of the securities; DTC’s records reflect only the identity of the Direct Participants to whose accounts such securities are credited, which may or may not be the Beneficial Owners. The Participants will remain responsible for keeping account of their holdings on behalf of their customers.

Conveyance of notices and other communications by DTC to Direct Participants, by Direct Participants to Indirect Participants, and by Direct Participants and Indirect Participants to Beneficial Owners will be governed by arrangements among them, subject to any statutory or regulatory requirements as may be in effect from time to time.

Neither DTC nor Cede & Co. will consent or vote with respect to securities. Under its usual procedures DTC mails an Omnibus Proxy to the issuer as soon as possible after the record date. The Omnibus Proxy assigns Cede & Co.'s consenting or voting rights to those Direct Participants to whose accounts the securities are credited on the record date (identified in a listing attached to the Omnibus Proxy).

Principal and interest payments on the Notes will be made to Cede & Co., as nominee of DTC. DTC's practice is to credit Direct Participants' accounts, upon DTC's receipt of funds and corresponding detail information from issuer or agent, on payable date in accordance with their respective holdings shown on DTC's records. Payments by Participants to Beneficial Owners will be governed by standing instructions and customary practices, as is the case with securities held for the accounts of customers in bearer form or registered in "street name," and will be the responsibility of such Participant and not of DTC, the agent, or the City, subject to any statutory or regulatory requirements as may be in effect from time to time. Payment of principal and interest to Cede & Co. is the responsibility of the City or the agent, disbursement of such payments to Direct Participants shall be the responsibility of DTC, and disbursement of such payments to the Beneficial Owners shall be the responsibility of Direct and Indirect Participants.

DTC may discontinue providing its services as securities depository with respect to the Notes at any time by giving reasonable notice to the City or the agent. Under such circumstances, in the event that a successor securities depository is not obtained, Note certificates are required to be printed and delivered.

The City may decide to discontinue use of the system of book-entry transfers through DTC (or a successor securities depository). In that event, Note certificates will be printed and delivered.

The information in this section concerning DTC and DTC's book-entry system has been obtained from sources that the City believes to be reliable, but the City takes no responsibility for the accuracy thereof.

### **Replacement Notes Upon Termination or Failure of the Book-Entry-Only System**

In the event that (a) DTC determines not to continue to act as securities depository for the Notes, or (b) the City determines that continuation of the book-entry system of evidence and transfer of ownership of the Notes would adversely affect the interests of the Beneficial Owners of the Notes, the City will discontinue the book-entry system with DTC. If the City fails to identify another qualified securities depository to replace DTC, the City will authenticate and deliver replacement Notes in the form of fully-registered certificates.

### **Security and Remedies**

The Notes will be general obligations of the City and the City will pledge its full faith and credit to pay the principal of and interest on the Notes when due. Unless paid from other sources, the Notes are payable from ad valorem taxes which may be levied on all taxable property subject to taxation by the City without limitation as to rate or amount, except as to certain classified property such as certified forest lands taxable at a limited rate and dwelling houses of qualified elderly persons of low income or of qualified disabled persons taxable at limited amounts.

Payment on the Notes is not limited to property tax revenues or any other revenue source, but certain revenues of the City may be restricted as to use and therefore may not be available to pay debt service on the Notes.

There are no statutory provisions for priorities in the payment of general obligation debt of the City. There are no statutory provisions for a lien on any portion of the tax levy or other revenues to secure the Notes, or judgments thereon, in priority to other claims.

The City is subject to suit on its general obligation bonds or notes and a court of competent jurisdiction has power in appropriate proceedings to render a judgment against the City. Courts of competent jurisdiction have power in appropriate proceedings to order payment of a judgment on such bonds or notes from funds lawfully available therefor or, in the absence thereof, to order the City to take all lawful action to obtain the same, including the raising of the required amount in the next tax levy. In exercising their discretion as to whether to enter such an order, the courts may take into account all relevant factors including the current operating needs of the City and availability and adequacy of other remedies. Enforcement of a claim for payment of principal of or interest on the Notes would also be subject to the applicable provisions of Federal bankruptcy laws and to provisions of other statutes, if any, hereafter enacted by the Congress or the Connecticut General Assembly extending the time for payment or imposing other constraints upon enforcement insofar as the same may be constitutionally applied. Section 7-566 of the Connecticut General Statutes, as amended, provides that no Connecticut municipality shall file a petition in bankruptcy without the express prior written consent of the Governor.

**THE CITY OF STAMFORD, CONNECTICUT HAS NEVER DEFAULTED IN THE PAYMENT OF  
PRINCIPAL OR INTEREST ON ITS BONDS OR NOTES.  
THE CITY**

The following is a brief description of the City of Stamford (the "City") together with certain information concerning its economy, governmental organization, indebtedness, current major revenue sources, and general and specific funds.

**General Description**

Stamford, first settled in 1641, is Connecticut's fourth largest city by population. It was named the Town of Stamford in 1642 and was admitted to Connecticut in October 1662. In 1893 the City of Stamford, comprising the central portion of the Town of Stamford, was incorporated. Thereafter, the City of Stamford became a composite part of the Town of Stamford, resulting in two separate governments. On April 15, 1949 the Town and City were consolidated and named the City of Stamford. Stamford covers an area of 39.9 square miles located on Long Island Sound between Greenwich to the west and New Canaan and Darien to the east.

The City is about one hour from New York City by rail or highway transportation. It is on the mainline of Metro North Commuter Railroad, Amtrak and Conrail, which provide daily passenger and freight service. It is served by interstate, intrastate, and local bus lines. The Connecticut Turnpike, I-95; the Boston Post Road, U.S. Route 1; and the Merritt Parkway, State Route 15, traverse the City.

Stamford is a center for major international corporate headquarters and the major retail trade center of Fairfield County, yet it maintains its suburban character and residential areas. Through sound urban planning, the City has strengthened its retail core, increased its housing and cultural facilities and attracted major office development. It is also an important residential suburb in one of the highest per capita income areas of the United States. The State of Connecticut's Office of Policy and Management reports Stamford's per capita income for 1996 was \$47,909, with a 1998 population of 110,689. The U.S. Department of Housing and Urban Development's fiscal year 1998 estimate of median family income for the City for 1999 was \$94,300. According to the 1990 U.S. Census, the Stamford Metropolitan Area ranked second in the nation with a median family income of \$67,049.

Notwithstanding the City's position as a major corporate and retail trade center, the City has moved aggressively to enhance the opportunities for neighborhood revitalization and economic development. It has expended its technical capabilities to organize and manage comprehensive development strategies; it has formed a partnership with the

business community resulting in the creation of a non-profit Stamford Partnership to address economic problem-solving that only such a public/private partnership pooling of resources can realistically address. It has also created citizen advisory groups in key target neighborhoods thus building a bridge of dialogue essential to progress. The City has improved its fiscal management capabilities through the addition of an Office of Policy and Management and the establishment of closer liaison between the Planning and Financial Departments, and has developed a new on-line computerized budgeting, purchasing and financial control system.

## **Description of Government**

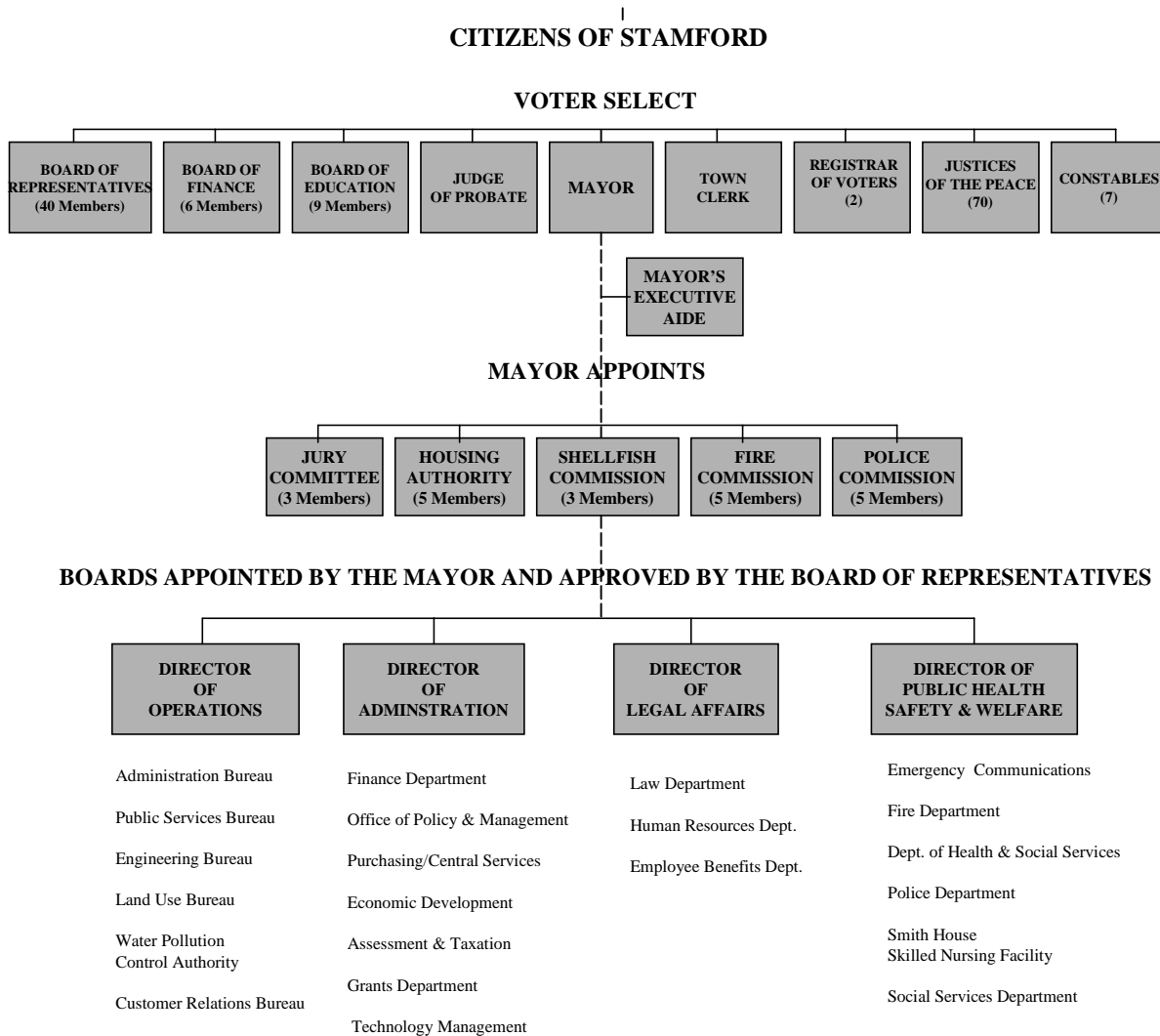
The City of Stamford operates under a Charter adopted in 1949 and most recently revised in November 1995. The 1995 revisions involved the reorganization and consolidation of departments and commissions within the City.

The chief executive officer of the City is the Mayor, currently elected for a four-year term of office. The legislative function is performed by a forty-member Board of Representatives whose members are elected, two from each of twenty districts, for four-year terms. The Board of Representatives adopts ordinances and resolutions and must approve all expenditures of funds. A six-member Board of Finance, elected to staggered four-year terms with provisions for representation of two major political parties, establishes fiscal policy and must approve all expenditures of funds.

The Director of Administration is appointed by the Mayor and confirmed by the Board of Representatives. Under the direction of the Mayor, the Director of Administration has supervision over the Department of Finance, Office of Policy and Management, Purchasing, Assessment and Taxation, Community Development, Economic Development, Intergovernmental Grants, and Technology Management Services. The Director of Administration is the Chief Fiscal Officer of the City and performs accounting of all funds showing all financial transactions for all commissions, boards, departments, offices, agencies, authorities and other entities of the City except the Board of Education.

The Director of Administration has the powers and duties conferred on Town Treasurers, to issue and market all Bonds and to invest funds of the City. The Director of Administration is also responsible for the preparation of the operating and capital budgets of the City. In addition, in accordance with Section 8-20-3 of the City Charter, the Director of Administration submits his opinion to the Mayor and Board of Finance in December of each year setting forth the amount and nature of capital expenditures that the City may incur safely for each of the six succeeding years.

# Organizational Chart



## Administration

The Mayor appoints four Directors to his cabinet which are approved by the Board of Representatives: the Director of Administration, Director of Operations, Director of Legal Affairs, and Director of Public Safety, Health and Welfare. They serve at the Mayor's pleasure and their terms are coterminous with the Mayor's term of office. The Mayor's Executive Aide also serves as a member of the cabinet.

### PRINCIPAL OFFICIALS

<u>Office</u>	<u>Name</u>	<u>Manner of Selection &amp; Term</u>	<u>Length of Service</u>
Mayor <sup>(1)</sup>	Dannel P. Malloy <sup>(2)</sup>	Elected – 4 years	4.6 years
Director of Administration	Thomas S. Hamilton	Appointed – 4 years	4.6 years
Director of Operations	Timothy Curtin (Acting)	Appointed – 4 years	.5 years
Director of Legal Affairs	Andrew McDonald	Appointed – 4 years	1.5 years
Director of Public Health, Safety and Welfare	John C. Byrne	Appointed – 4 years	4.6 years
Controller	Lisa M. Reynolds	Civil Service – Indefinite	1.3 years
Superintendent of Schools	Dr. Anthony Mazzullo	Appointed – 3 yr. contract	.7 years

<sup>(1)</sup> Through a change in the City charter, the term of the Office of Mayor has been extended from two years to four years beginning with the 1998 term.  
<sup>(2)</sup> The Mayor is in the third year of his second term of office.

The City administers a Civil Service System, including hiring, promotional and competitive examinations and disciplinary actions. In addition, the Civil Service System conducts training programs and maintains employee benefit programs. The Director of Personnel and Labor Relations conducts collective bargaining negotiations on 14 contracts with municipal employee labor unions. The Board of Education negotiates with its employee labor unions. See "Municipal Employee Collective Bargaining Organizations" herein.

The City currently employs 3,177 full time persons for General Government and the Board of Education. The following table shows the City's employment rolls for the current and past six fiscal years.

**MUNICIPAL EMPLOYEES<sup>(1)</sup>**

	<u>1999</u>	<u>1998</u>	<u>1997</u>	<u>1996</u>	<u>1995</u>	<u>1994</u>	<u>1993</u>
General Government	1,342 <sup>(2)</sup>	1,283	1,275	1,298	1,278	1,278	1,271
Board of Education (full-time)	<u>1,835</u>	<u>1,748</u>	<u>1,763</u>	<u>1,771</u>	<u>1,677</u>	<u>1,643</u>	<u>1,607</u>
Total	<u>3,177</u>	<u>3,031</u>	<u>3,038</u>	<u>3,069</u>	<u>2,955</u>	<u>2,921</u>	<u>2,878</u>

(1) As of July 1 each fiscal year.

(2) General government includes employees assigned to the Smith House Nursing Home (125) the Water Pollution Control Authority (36); the E. Gaynor Brennan Golf course (6); and the Risk Management Fund (3).

Source: City of Stamford.

**CITY OF STAMFORD  
MUNICIPAL EMPLOYEES BARGAINING ORGANIZATIONS**

<u>City Group</u>	<u>Contact Expires</u>
Stamford Police Association, Inc.	6-30-01
Local #786 of the International Association of Firefighters, AFL-CIO (downtown)	6-30-99 (1)
Local #786 of the International Association of Firefighters, AFL-CIO (volunteer companies)	6-30-03
Local #2657 of the AFSCME, Council #4, AFL-CIO (supervisors)	6-30-00 (2)
Local #465 of the AFSCME, Council # 4, AFL-CIO (Registered Nurses)	6-30-00 (2)
Local #1303-273 of the AFSCME, Council #4, AFL-CIO (Hygienists)	6-30-00 (2)
Local #1303-191 of the AFSCME, Council # 4, AFL-CIO (Attorneys)	6-30-00 (2)
Local #145 of the International Brotherhood of Teamsters, AFL-CIO	6-30-01
Local #2377 of the International Union, United Automobile Workers, AFL-CIO	6-30-01
New England Health Care Employees Union, District 1199 (Smith House)	6-30-01

<u>Board of Education</u>	<u>Contact Expires</u>
Local #1083 of the AFSCME, Council #4, AFL-CIO (Custodian & Maintenance)	6-30-02
Local #1083 if the AFSCME, Council #4, AFL-CIO (Security and Community Liaison Employees)	6-30-02
Local #1083 of the AFSCME, Council #4, AFL-CIO (Food Service Employees)	6-30-04
Stamford Education Association	6-30-00
Education Assistants of Stamford Association	6-30-01
School Administrators Association of Stamford	6-30-01

(1) In arbitration.

(2) In negotiation.

Source: City of Stamford Human Resources Division and Stamford Public Schools Personnel Office

**City Services**

In November 1995, the City approved charter revisions that resulted in various departments being reorganized and consolidated. The following descriptions describe the organizational structure of City services currently being provided.

**Fire Department** - The Stamford Fire Department is responsible for fire protection in Tax Districts A and B, the southern third of the City, including the central business district. The department has a total of 231 authorized personnel operating out of six fire stations. The northern two-thirds of the City are served by five volunteer fire companies operating out of seven fire stations complimented by a limited number of paid firefighters. In 1999, the

City transitioned thirty-six (36) paid firefighters assigned to the volunteer fire companies onto the City's payroll. This change resulted in improved fire protection in volunteer districts and reduced employee benefit costs for the paid personnel.

***Department of Health and Social Services*** - The Department of Health & Social Services is responsible for a wide range of public health activities including preventive treatment, public education, laboratory work and code enforcement. The department provides testing, clinics and immunization services for numerous disease and health problems.

The environmental health program inspects and licenses food service establishments, grocery stores, markets, septic systems, refuse collectors and beaches.

The City enforces minimum housing standards as established by City ordinances, and the school health program serves all public and private school programs.

***Police Department*** - The Stamford Police Department provides full-time police protection with an authorized strength of 315 officers. The department consists of detective, youth, patrol, marine, parks, and public housing divisions. A computerized incident tracking system maintains on-line information for all service calls handled by the department throughout the year. The department has recently implemented a comprehensive, neighborhood based community policing initiative.

***Smith House Health Care Center*** - The City operates a 128 bed skilled nursing facility, in order to provide financially viable long-term health care services to the frail and indigent elderly of the City of Stamford, which includes medical and nursing care, the provision of meals, various therapy treatments, recreation activities, and events, and a living environment which conforms to State and Federal requirements. The City department was founded in 1962 in response to a demand for such specialized services which was prompted particularly though the introduction of Medicaid and Medicare Programs. Since the mission of the facility is to primarily serve and accommodate City of Stamford residents in need of such care and services, the general population of the City benefits. Due to its not-for-profit status, the Smith House also serves as a focal point and recipient of the City of Stamford citizens dedicated to assisting the elderly and poor through their financial contributions and time commitments.

***Arts and Culture*** - The Stamford Center for the Arts is a regional performing arts center established in 1983 that annually sponsors productions and performances by individual artists and groups that include music, dance and theater. In 1989 the Center acquired the 1,600 seat Palace Theater, a restored theater built in 1927, which will be renovated extensively in the near future.

In July 1998 the City formed the Stamford Cultural Development Corporation (SCDC), a designated local arts service agency that provides consulting services on cultural development issues. It offers professional services to artists and cultural organizations to enable them to provide diverse cultural services to the citizens of Stamford and the surrounding region. Services and programs include professional development opportunities, research, organizational stabilization and audience development, and public/private partnerships.

Other organizations that provide or promote cultural activities in the City are the Stamford Museum and Nature Center, a 118 acre natural woodland park and museum that blends history, nature and art; the Bartlett Arboretum a state facility in North Stamford with 63 acres of nature trails and landscaped gardens; the Stamford Historical Society Museum, a museum of local history; and the Whitney Museum of American Art, a branch of the New York City museum.

***Library*** - The City of Stamford has one main library, the Ferguson Library, four branches and one bookmobile. The main library is approximately 91,000 square feet with more than 377,000 volumes, over 2,000 periodicals and approximately 27,000 audiovisual items. Total annual circulation exceeds 800,000 items with approximately 74,000

registered borrowers. A new, expanded branch library has been completed and was opened to the public in January 2000. All of the libraries are operated by the Ferguson Library, Inc., a 501 (c)(3) non-profit corporation.

***Stamford Partnership*** - The City established a non-profit partnership of business and governmental leaders in 1979 that assists the City: (a) in improving its economic, physical and fiscal health; (b) to work with public officials on strategies and else with community wide issues; (c) to act as a catalyst for civic action; and (d) to serve as a conduit for the application of private sector resources for civic purposes. The Partnership's activities are based on strategic objectives of employment and skills retention, downtown revitalization, neighborhood improvement, municipal finance, municipal facilities and transportation improvement.

***Office of Operations*** - The Office of Operations was created with the 1995 Charter Revision.

**Administrative Bureau.** The mission of the Administrative Bureau is to provide the other Bureaus of the Office of Operations with administrative assistance and to provide the general policy guidelines by which all Bureaus operate. The following areas fall under its jurisdiction.

**Public Services Bureau.** This area is comprised of the Highway, Fleet Management, Facilities Management and Solid Waste divisions. The equipment, personnel, administrative, and technical skills available within these divisions are integrated and tasks organized by activity to efficiently provide the services and service programs required by the City.

The Highway division's responsibility is to maintain all City of Stamford right-of-ways in a reasonable, safe, and passable condition at all times. The City's road network consists of some 345 miles, which is the largest municipal road system in the state.

The City has an annual leaf pick-up program provided as a means of meeting state requirements for reducing solid waste transported to landfills, maintaining reasonable and safe travel conditions along City of Stamford rights-of-way and accommodating the much valued service of curbside residential leaf pick-up.

Facilities Management was created to provide the citizens, employees and visitors to the City of Stamford safe, comfortable, high quality functional facilities for professional, recreational and service functions.

The Solid Waste division operates a six-day a week, two shifts per day, State licensed solid waste transfer station. In fiscal year 1998-99, 56,780 tons of municipal solid waste (msw) and 4,756 tons of bulky waste were accepted, sorted, processed and reloaded for over the road hauling to disposal facilities. The msw is disposed of at a Waste Management, Inc. burn plant, in Peekskill, New York, under the terms of a five-year contract which expires September 30, 2004. The current cost of disposal is \$62.50 per ton. The bulky waste is disposed of in a landfill in Pennsylvania under the term of a five-year contract with Waste Management, Inc. that expires December 31, 2004. The current cost of disposal is \$60.77 per ton.

The Transfer station also operates a recycling drop-off center. In addition, the City provides for the once-a-week combined collection of co-mingled recyclables of glass, metal, plastic food and beverage containers, newspapers, mixed paper and corrugated cardboard from approximately 40,000 residences in the City.

The Transfer station operation also includes a scalehouse facility and approximately 45,000 separate transactions were recorded in fiscal year 1998-99. The City charges \$65.00 per ton for municipal solid waste and \$65.00 per ton for bulky waste to users of the transfer station effective July 1, 1999.

**Customer Relations Bureau.** For many Stamford residents and the general public, the Customer Relations Bureau is their first, only, or most frequent person-to-person contact within the Office of Operations and the City of Stamford. The mission of all divisions of the Customer Relations Bureau is to provide superior service to residents and the public by ensuring that all contacts are handled competently, courteously and efficiently. In August 1999, the

Citizens' Service Center began receiving requests for service from Board of Education personnel relating to school facilities. Since its inception, (July 15, 1996) the Citizens' Service Center has received and cleared over 43,600 complaints and requests from citizens of the City.

The Leisure Services Division enhances the quality of life in Stamford by providing diverse recreational programs and coordinating services with and to other leisure service providers. The City has over 650 acres of park land and recreational facilities, structures and buildings including four beaches, four municipal marinas that can serve over 600 boats up to 28 feet in length, athletic fields, game courts and picnic areas, an indoor ice skating rink, a theater program, as well as planting beds and roadside areas and cultural and historic resources such as Fort Stamford and the Cove Island Mansion.

Engineering Bureau. Over the next three years, the City is anticipating approximately \$28 million per year, in capital construction including Board of Education projects. Coupled with Federal and State funded programs, the Engineering Bureau will be overseeing as much as \$40 million in capital design and construction, per year. It is the Bureau's goal to be able to prepare all designs of of public works projects "in house", with the majority of Board of Education designs prepared by outside architects and engineers.

Land Use Bureau. The Planning Board is responsible for planning and coordinating the development of the City in accordance with the City Master Plan. The Board prepares, adopts and amends the Master Plan; adopts and amends Subdivision Regulations; reviews and acts upon subdivision applications; prepares Capital Project Budgets and Programs; reviews and acts upon referrals from Zoning Board and Zoning Board Appeals; and prepares and Adopts neighborhood plans.

The Zoning Board is responsible for regulating the use of land and buildings within the City. The Board prepares, adopts and amends the Zoning Regulations and Zoning map so as to control and guide the appropriate use and development of property. The Board also reviews site and architectural plans, special exceptions and Coastal Site Plan applications.

The primary function of the Zoning Board of Appeals is to consider variances of the zoning regulations where there is an unusual hardship with the land.

The Environmental Protection Board is organized by Ordinance as a multipurpose City Agency combining the duties and responsibilities of a local Inland Wetland and Watercourses Agency, a local Conservation Commission, a local Flood and Erosion Control Board, and a local Aquifer Protection Agency.

Water Pollution Control Authority ("WPCA"). The mission of the WPCA is to protect the environment and public health for the City of Stamford. This is accomplished by operating and maintaining the Water Pollution Control Facility, pumping stations and sanitary sewer systems in the most effective and efficient manner. This includes applying "state-of-the-art" process control techniques to the operation of the treatment plant and good maintenance management for the plant, pumping stations and sanitary sewer systems.

***Educational Services and Facilities*** - Stamford has a nine member Board of Education, elected to three-year terms, with four and five members, respectively, elected every two years. The officers of the Board, elected by Board members at the organizational meeting held every January, include a Chairman, a Vice-Chairman and a Secretary.

The primary function of the Board is to establish policy and oversee the operations of the public school system. Some of the areas for which such policies are set include curriculum, budget requests submissions, policies ensuring that funds for education as appropriated by the City are properly expended, implementation of both state and federal laws, and planning for facilities needed by the system, including construction and renovation.

The City has two public high schools, four middle schools and twelve elementary schools. In addition, there are twelve private and parochial schools, as well as a state technical high school. The Board employs 1,383 professional (certified) personnel and 627 non-certified personnel including secretaries, clerks, custodians, maintenance personnel and teachers' aides.

### PUBLIC SCHOOL FACILITIES

<u>School</u>	<u>Grades</u>	<u>Date of Construction (Remodeling)</u>	<u>Type of Construction</u>	<u>Number of Classrooms</u>	<u>1999-00 Enrollment</u>
Davenport Ridge <sup>(1)</sup>	K5	1972	Concrete	40	644
Murphy	K5	1900(22,56,88)	Brick	33	504
Newfield	K5	1954(95)	Brick	26	641
Northeast	K5	1966	Brick/Stone	37	772
Rogers	PK-5	1889(64)	Brick	32	675
Bank St @ Toquam	PK-5	1967(91)	Brick	37	481
Roxbury	K-5	1955(64)(95)	Brick	35	822
Springdale	K-5	1908(11,19,20,56,74)	Brick	34	613
Hart	PK-4	1915(62)(98)	Brick	40	588
Stark	K-5	1927(53,70, 97)	Brick	33	635
Stillmeadow	K-5	1972	Block	39	653
Westover	K-5	1999	Brick	26	621
Cloonan	6-8	1967	Brick	52	833
Dolan	6-8	1949	Brick	31	825
Turn of River	6-8	1963	Block/Brick	41	707
Rippowam Center <sup>(2)</sup>	6-8	1961	Steel frame	77	583
Stamford High School	9-12	1928(67,84)	Brick/Stone	106	2,066
Westhill High School	9-12	1971	Steel frame/Brick	121	1,588
Administrative office	NA	1970	Block	NA	
Boyle Stadium	NA	1937(97)	Stone	NA	
S.T.E.P. Program <sup>(3)</sup>	9-12	1997	Brick	—	79
Special Enrollments	NA	—	—	—	97
Out of District Placements	NA	NA	NA	NA	123
Home Instruction	NA	NA	NA	NA	134
<b>TOTAL</b>					<u><b>14,684</b></u>

(1) Includes New Arrival Program.

(2) Includes Magnet Middle and New Arrival Program.

(3) S.T.E.P. is currently housed at J.M. Wright Technical School.

Source: City of Stamford Board of Education, State Department of Education.

**PUBLIC SCHOOL ENROLLMENT<sup>(1)</sup>**

<u>Fiscal Year</u>	<u>Elementary Head — K-6</u>	<u>Middle School 7-8</u>	<u>High School 9-12</u>	<u>Bilingual Classes Pre-K Ed Special Education</u>	<u>Total</u>
1986-1987	5,771	1,576	3,398	828	11,573
1987-1988	5,865	1,591	3,142	815	11,413
1988-1989	5,925	1,542	3,015	834	11,316
1989-1990	6,025	1,584	2,914	871	11,394
1990-1991	6,293	1,584	2,905	902	11,684
	<u>K-5</u>	<u>6-8</u>	<u>9-12</u>		
1991-1992	5,926	2,466	3,039	836	12,267
1992-1993	6,046	2,425	2,977	1,060	12,508
1993-1994	6,187	2,659	3,390	982	13,218
1994-1995	6,464	2,677	3,312	1,198	13,651
1995-1996	6,612	2,785	3,358	1,289	14,044
1996-1997	6,735	2,789	3,343	1,463	14,330
1997-1998	6,743	2,901	3,364	1,393	14,401
1998-1999	6,922	2,984	3,450	1,147	14,506
1999-2000	6,997	2,821	3,581	1,285	14,684
	<b>Projections</b>				
2000-2001	7,472	3,237	3,970	131 <sup>(2)</sup>	14,810
2001-2002	7,330	3,466	4,034	131 <sup>(2)</sup>	14,961
2002-2003	7,234	3,607	4,151	131 <sup>(2)</sup>	15,123
2003-2004	7,176	3,484	4,358	131 <sup>(2)</sup>	15,149

(1) As of October 1.

(2) The State Department of Education has revised the manner in which it projects enrollment; all students are now placed in their respective grades.

Source: City of Stamford Board of Education; State of Connecticut Department of Education.

**Colleges** - The Stamford branch of the University of Connecticut, recently relocated downtown, serves approximately 1,200 full-time and part-time undergraduate students and approximately 500 active MBA candidates. The undergraduate program is both a two-year and four-year program, with baccalaureate majors offered in political science, economics, sociology, psychology, english and history, as well as a bachelor of general studies program for returning adult students. The new campus was opened in January 1998.

A number of other colleges and universities offer both credit and non-credit programs in Stamford, including Norwalk Community College, Sacred Heart University, Fairfield University, Bridgeport Engineering Institute and the University of Bridgeport.

**Central Business District** - The City of Stamford's central business district redevelopment is under the jurisdiction of two city agencies, the Planning Board and the Urban Redevelopment Commission (URC). The URC is responsible for approximately 130 acres known as the "Southeast Quadrant" comprising 90 percent of the central business district. The original redevelopment plan was approved in 1963 and has been amended from time to time since then.

The redevelopment program has two major objectives; first, to eliminate blight and deterioration in Stamford's downtown area and secondly, to provide a physical environment that would attract the investment of private capital in the central business district and beyond.

Since 1970 the URC has completed in the central business district the development of over 5,729,000 square feet of office space, 1,094,685 square feet of retail space and 1,717 new residential units.

The Stamford Town Center, the retail centerpiece for the City and region, has 1,000,000 square feet of retail space on four levels, served by seven levels of enclosed parking that accommodate 4,000 vehicles. Over \$175 million has been invested in this center which generates between \$200 to \$250 million in annual sales.

The URC was also involved in the development of a new headquarters building and trading facility for Warburg, Dillon and Read, which opened in October 1997. The first phase of this facility cost approximately \$140 million. Twenty-three hundred employees from Warburg, Dillon and Read are now located in Stamford.

In addition to the above, additional housing, retail and office are currently being planned for development in this area. According to the Master Plan for this area, this new development will take place on a re-configured block which will provide space to promote and enhance pedestrian movement. In addition, the City is actively planning for the development of the Mill River Corridor area, directly adjacent to downtown.

**Government Assisted Housing** - The City of Stamford Housing Authority constructs, operates and maintains housing for low and moderate income families and senior citizens. The Authority manages over 1,643 dwelling units in 20 projects and also manages a rental assistance program for over 700 families in privately owned housing units throughout the City. The City is at the forefront of efforts to privatize the operation of public housing. In 1998, the Rippowam Park Apartments were renovated under the City's privatization efforts.

**Stamford Community Development Program** - The City administers federal community development block grants as well as the federal HOME program. The programs objective is to improve the quality of life and create a suitable living environment for needy residents in targeted neighborhoods with an emphasis on rehabilitation of existing housing stock and the creation of new housing at levels affordable to low and moderate income individuals and families. The City also offers assistance to non-profit housing developers and supports a variety of social service activities for low and moderate income individuals and families.

## ECONOMIC AND DEMOGRAPHIC DATA

### POPULATION TRENDS

<u>Year</u>	<u>City of Stamford</u>	<u>Fairfield County</u>	<u>State of Connecticut</u>
1960	92,713	653,589	2,535,234
1970	108,798	792,814	3,032,217
1980	102,453	807,143	3,107,576
1990	108,056	827,542	3,287,116
1996	111,621	833,761	3,274,238
1998	110,689	831,617	3,274,069

*Source: U.S. Department of Commerce, Bureau of Census; State of Connecticut, Department of Health.*

## AGE CHARACTERISTICS OF POPULATION

	<u>City of Stamford</u>		<u>State of Connecticut</u>	
	<u>Number</u>	<u>Percent</u> <sup>(1)</sup>	<u>Number</u>	<u>Percent</u>
Under 5 years of age	7,446	6.9%	228,356	6.9%
5-17 years of age	14,327	13.3%	521,225	15.9%
18-24 years of age	10,196	9.4%	345,433	10.5%
25-44 years of age	38,784	35.9%	1,094,878	33.3%
45-64 years of age	22,970	21.3%	651,317	19.8%
Over 65 years of age	<u>14,333</u>	<u>13.3%</u>	<u>445,907</u>	<u>13.6%</u>
<b>Total</b>	<b><u>108,056</u></b>	<b><u>100.0%</u></b>	<b><u>3,287,116</u></b>	<b><u>100.0%</u></b>

(1) Columns may not add due to rounding.

Source: U.S. Department of Commerce, Bureau of Census, 1990.

## EDUCATIONAL ATTAINMENT YEARS OF SCHOOL COMPLETED, AGE 25 & OVER

			<u>All Persons</u>	
			<u>Number</u>	<u>Percent</u>
Elementary	0-8 years	5,507	7.0%	
High School	1-3 years	8,858	11.6%	
	4 years	20,051	26.3%	
College	1-3 years	15,132	19.8%	
	4 years or more	15,831	20.8%	
Graduate or professional degrees		<u>11,003</u>	<u>14.5%</u>	
<b>Total</b>		<b><u>76,382</u></b>	<b><u>100.0%</u></b>	
Percent with 8 years or less			7.0%	
Percent of High School Graduates or higher			81.2%	
Percent of College Graduates			35.1%	

Source: U.S. Department of Commerce, Bureau of Census, 1990.

## SELECTED WEALTH AND INCOME INDICATORS

Median family income and, as available, per capita income statistics are provided for the City, Fairfield County and the State.

	<u>Median Family Income (1990)</u>	<u>Per Capita Income</u>	
		<u>(1987)</u>	<u>(1996)</u>
City of Stamford	\$57,360	\$20,696	\$47,909
Fairfield County	57,990	20,093	56,761
Connecticut	49,199	16,094	33,875

Source: U.S. Department of Commerce, Bureau of Census, 1990 Census; U.S. Bureau of Economic Analysis; State of Connecticut Office of Policy & Management.

**PER CAPITA PERSONAL INCOME — BY METROPOLITAN AREA, 1995-97**

<u>Area Name</u>	<u>1995</u>	<u>1996</u>	<u>1997</u>	<u>Rank in U.S. 1992</u>
San Francisco-Oakland-San Jose, CA CMSA	\$30,562	\$32,571	\$34,634	1
New York-No. New Jersey, CT-PA	31,352	33,031	34,560	2
Washington-Baltimore, DC-MD-VA-WV	28,601	29,838	31,265	3
Denver-Boulder-Greeley, CO	27,024	28,483	30,099	4
Chicago-Gary-Kenosha, II-IN-WI	27,296	28,555	29,981	5
Seattle-Tacoma-Bremerton, WA	26,363	27,855	29,839	6
Philadelphia-Wilmington, Atlantic City, PA-NJ-DE-MD	26,493	27,936	29,292	7
State of Connecticut	32,073	33,835	35,954	1
United States	23,059	24,164	25,288	-

Source: U.S. Department of Commerce

**EFFECTIVE BUYING INCOME**

Effective Buying Income (EBI) is defined as personal income less personal tax and non-tax payments — a number often referred to as “disposable” or “after-tax” income.

<u>Area</u>	<u>Median Household (EBI)</u> <u>1999</u>
City of Stamford	\$55,235
Fairfield County	63,217
State of Connecticut	49,393
United States	35,377

Source: “Sales and Marketing Management, 1999 Survey of Buying Power”.

**VALUE OF BUILDING PERMITS**

<u>Fiscal Year</u> <u>Ended 6/30</u>	<u>Residential</u>	<u>Commercial</u> <u>Industrial</u>	<u>Apartments/</u> <u>Condominiums</u>	<u>Total</u>
1999	\$41,062,696	\$115,280,275	\$42,893,700	\$199,236,671
1998	51,375,256	92,721,886	5,708,361	149,805,503
1997	32,554,217	202,105,799	13,708,600	248,368,616
1996	50,219,499	157,298,746	5,770,000	213,288,245
1995	60,462,008	64,019,438	6,149,081	130,630,527
1994	15,908,982	25,638,198	1,304,000	42,851,180
1993	42,356,120	28,100,148	0	70,456,268
1992	22,993,484	38,395,587	1,845,512	58,234,583
1991	21,034,789	30,555,707	12,780,000	64,370,496
1990	28,750,291	72,437,980	16,754,858	117,943,129
1989	30,325,662	83,944,840	16,240,006	130,511,508

Source: City of Stamford, Building Department.

### HOUSING INVENTORY

<u>Type</u>	<u>Units</u>	<u>Percent</u> <sup>(1)</sup>
Single Family	21,731	46.6%
Two Family	8,163	17.5%
Multiple Family	15,821	33.9%
Mobile home, trailer etc.	<u>852</u>	<u>1.9%</u>
Total inventory	<u>46,576</u>	<u>100.0%</u>

(1) Columns may not add due to rounding.

Source: City of Stamford Planning and Zoning

### LAND USE SUMMARY

<u>Land Use Category</u>	<u>Acres</u>	<u>Percent</u>
Zoned for single family	17,794	83.4%
Zoned for multi-family	1,662	7.7%
Zoned for business	744	3.5%
Zoned for industry	<u>1,135</u>	<u>5.4%</u>
Total	<u>21,335</u>	<u>100.0%</u>
Used for single family	8,805	41.0%
Used for multi-family	822	3.8%
Used for business	394	1.8%
Used for industry	788	3.7%
Used for public and semi-public	4,540	21.7%
Vacant	<u>5,986</u>	<u>28.0%</u>
Total	<u>21,335</u>	<u>100.0%</u>

Source: City of Stamford Planning and Zoning.

### OFFICE VACANCY RATES

<u>Calendar Year</u>	<u>Stamford Central Business District</u>		<u>Stamford Non-Central Business District</u>		<u>Fairfield County</u>	
	<u>Square Feet Existing</u>	<u>Vacancy Percent</u>	<u>Square Feet Existing</u>	<u>Vacancy Percent</u>	<u>Square Feet Existing</u>	<u>Vacancy Percent</u>
1999	6,248,071	6.5%	8,434,180	9.6%	37,353,281	10.0%
1998	6,248,071	6.2%	8,386,631	12.0%	37,526,869	9.7%
1997	5,668,071	7.6%	8,357,324	12.4%	36,665,658	11.0%
1996	5,750,655	12.0%	8,729,308	20.8%	37,306,798	15.1%
1995	5,827,091	15.6%	8,654,636	15.8%	37,626,408	15.4%
1994	5,810,706	17.4%	8,871,806	19.7%	37,710,476	17.7%
1993	5,932,456	23.9%	8,871,806	18.0%	37,877,772	21.0%
1992	5,912,456	27.7%	8,932,815	20.0%	37,961,016	25.1%
1991	5,907,409	30.2%	9,579,327	20.3%	38,017,728	25.1%

Source: Cushman and Wakefield of Connecticut, Inc.

## UNEMPLOYMENT RATE STATISTICS

The following table presents unemployment rates for the City, the Stamford Labor Market, the State, and for the United States:

<u>Yearly Average</u>	<u>City of Stamford</u>	<u>Stamford Labor Market</u>	<u>State of Connecticut</u>	<u>United States</u>
1988	2.4%	2.3%	3.0%	5.5%
1989	3.1%	2.7%	3.8%	5.3%
1990	4.3%	3.5%	5.1%	6.0%
1991	5.6%	4.7%	6.7%	6.8%
1992	6.5%	5.3%	7.5%	7.3%
1993	5.1%	4.1%	6.2%	6.8%
1994	4.7%	3.8%	5.6%	6.1%
1995	4.7%	3.8%	5.5%	5.6%
1996	4.7%	3.7%	5.7%	5.4%
1997	3.9%	3.2%	5.1%	4.9%
1998	2.7%	2.2%	3.4%	4.5%
1999	2.5%	2.1%	3.2%	4.2%
<b>2000 Monthly<sup>(1)</sup></b>				
January	2.1%	1.7%	2.7%	4.5%
February	2.4%	1.9%	3.0%	4.4%
March	1.9%	1.6%	2.5%	4.4%

**Note:** (1) Rates are not seasonally adjusted.

*Source: State of Connecticut, Department of Labor; United States Department of Labor, Bureau of Labor Statistics.*

## **MAJOR EMPLOYERS**

There are over 350 corporate and manufacturing industries located in Stamford. Stamford's major employers include the following:

<b><u>Name</u></b>	<b><u>Nature of Business</u></b>
City of Stamford	Government and Education
Pitney Bowes, Inc.	Office Equipment (HQ and Mfg.)
SBC Warburg Dillon Read	Investment Banking (HQ)
Gartner Group	Information Technology Advisory services
General Electric Capital Corporation	Consumer Finance (HQ)
Stamford Town Center	Retail Stores
Stamford Health Systems	Medical Care
Clairol, Inc.	Cosmetics (HQ and Mfg.)
General Re Corporation	Insurance (HQ)
U.S. Postal Service	Local and regional mail service
Purdue Pharma	Pharmaceuticals
Xerox Corporation	Office Equipment
Hyperion Software	Computer Software
Cendant	Consumer Services (HQ)
Macy's	Retailing
Omega Engineering	Temperature Control Devices (HQ and Mfg.)
Price WaterhouseCoopers	Public Accounting/Consulting
Thomson Corporation	Publishing
SNET	Telephone and Communications
Shamrock Maintenance Inc.	Building Cleaning Services
Time Warner	Entertainment Media
United Distillers & Vinters	Beverages (HQ)
First Union National Bank	Banking
Champion International	Forest Products (HQ)
Arthur Anderson & Co.	Public Accounting/Consulting
Citizen Utilities	Utility
CYTEC	Chemicals (Research Laboratories)
Circom/ACMI	Medical Instruments (HQ and Mfg.)
Citibank Global Asset Management	Finance
CBS Cable	Cable Television
General Signal	Transportation
Cadbury Beverages Ltd.	Beverages (HQ)
META Group	Consumer Services
ITDS	Computer Software
NacRe Insurance	Insurance
PanAmSat	Telecommunications
HQ — Headquarters/Offices	
Mfg — Manufacturing Facilities	

*Source: City of Stamford Department of Economic Development and the Stamford Chamber of Commerce.*

## **CITY INDEBTEDNESS**

Debt is authorized by the Board of Representatives, upon request of the Mayor and approval by the Board of Finance. The City adopts a capital budget at the time that it adopts an annual operating budget. Each capital budget is financed from a combination of bonds, grants and other City funds.

### **State of Connecticut Clean Water Fund**

The City has appropriated and authorized bonds in the amount of \$8,210,440 for renovations to the Hope Street Interceptor – Sanitary Sewer Line Project to be funded through the State of Connecticut Clean Water Fund Program (General Statutes Section 22a-475 et seq., as amended) which provides financial assistance through a combination of grants and loans bearing interest at a rate of 2% per annum. All participating municipalities receive a grant of 20% and a loan of 80% of total eligible costs (with the exception of combined sewer overflow correction projects which are financed with a 50% grant and a 50% loan). Amortization of each loan is required to begin one year from the earlier of the project completion date specified in the Loan Agreement, or the actual project completion date. The final maturity of each loan is twenty years from the scheduled completion date. Principal and interest payments are payable 1) in equal monthly installments commencing one month after the scheduled completion date, or 2) in a single annual installment representing 1/20 of total principal not later than one year from the project completion date specified in the Loan Agreement, the first years' date, and thereafter in monthly installments. The City may prepay their loans at any time prior to maturity without penalty. The City projects the total cost of the project will be \$8,210,440 which, to date, has been financed through a combination of a State Clean Water Fund Loans of approximately \$3,595,491 and grants of approximately \$850,646. As of June 1, 2000, the City will have made principal payments of, \$880,149 on the Clean Water Loans.

The City also has appropriated and authorized bonds in the amount of \$3,590,785 for design of the sewage treatment plant upgrade to be funded through the State of Connecticut Clean Water Fund Program.

### **School Projects**

Pursuant to Public Act No. 97-11, the State of Connecticut will provide proportional progress payments for eligible school construction expenses on projects approved after July 1, 1996. Debt service reimbursement will continue under the old program for all projects approved prior to July 1, 1996.

Under the old program, the State of Connecticut will reimburse the City for principal and interest costs for eligible school construction projects over the life of outstanding school bonds and the subsequent bond issues necessary to completely fund the projects. Under the new program, the State of Connecticut will make proportional progress payments for eligible construction costs during certain construction phases of the projects. All of the school construction projects included in this issue are payable under the old program.

## Computation of Statutory Debt Limit and Debt Margin

The following table sets forth the computation of the statutory debt limit of the City and the debt incurring margin as of June 1, 2000, adjusted to give effect to the Notes:

Total Fiscal Year 1999 tax collections (including interest and lien fees)	\$236,036,045
State Reimbursement for Revenue Loss on:	
Tax Relief for the Elderly	<u>146,685</u>
Base for Establishing Debt Limit	<u><u>\$236,182,730</u></u>

### Debt Limit

	<u>General Purpose</u>	<u>Schools</u>	<u>Sewers</u>	<u>Urban Renewal</u>	<u>Unfunded Pension Obligation</u>	<u>Total Debt</u>
General Purpose (2.25 times base)	\$531,411,143					
Schools (4.50 times base)		\$1,062,822,285				
Sewers (3.75 times base)			\$885,685,238			
Urban Renewal (3.25 times base)				\$767,593,873		
Unfunded Pension Obligation Debt (3 times base)					\$708,548,190	
Total Debt (7.00 times base)						\$1,653,279,110
<b>Indebtedness</b>						
Bonds Payable	115,650,377	87,659,039	24,450,584	275,000	0	228,035,000
Notes Payable (This Issue)(1)	13,000,000	21,000,000	1,000,000	0	0	35,000,000
Clean Water Fund PLO	0	0	2,700,361	0	0	2,700,361
Clean Water Fund, IFO			3,590,785			3,590,785
Authorized but Unissued Debt	<u>17,143,554</u>	<u>6,593,675</u>	<u>2,637,469</u>	<u>0</u>	<u>0</u>	<u>26,374,698</u>
<b>Total Indebtedness</b>	<u>145,066,915</u>	<u>116,150,861</u>	<u>34,238,030</u>	<u>275,000</u>	<u>0</u>	<u>295,700,844</u>
<b>Less:</b>						
School Construction Grants <sup>(2)</sup>		(23,505,937)				(23,505,937)
Sewer Assessments			(2,494,975)			(2,494,975)
<b>Total Net Indebtedness</b>	<u>145,006,915</u>	<u>92,644,924</u>	<u>31,743,055</u>	<u>275,000</u>	<u>0</u>	<u>269,699,932</u>
<b>Excess of Limit Over Outstanding and Authorized Debt</b>	<u>\$386,404,228</u>	<u>\$970,177,361</u>	<u>\$853,942,183</u>	<u>\$767,318,873</u>	<u>\$708,548,190</u>	<u>\$1,383,579,178</u>

(1) Estimated allocation.

(2) See "School Projects" – herein.

Source: City of Stamford, Department of Administration.

**In no case shall total indebtedness exceed seven times annual receipts from taxation ("the Base").**

## Calculation of Net Indebtedness

The following table sets forth all outstanding bond and note indebtedness of the City, as of June 1, 2000 adjusted to give effect to this financing, less applicable exclusions:

<b>Indebtedness</b> <sup>(1)</sup>	
<b>Bonded Debt</b>	
General Purpose	\$115,650,377
Schools	87,659,039
Sewers	24,450,584
Urban Renewal	<u>275,000</u>
Total Bonded Indebtedness	\$228,035,000
<b>Short-Term Debt</b>	
Bond Anticipation Notes (This Issue)	\$35,000,000
Clean Water Fund Debt (IFO)	3,590,785
<b>Other Debt</b>	
Clean Water Fund Debt (PLO)	<u>\$2,700,361</u>
Total Short-Term and Other Debt	\$41,291,146
<b>Gross Direct Indebtedness</b>	269,326,146
<b>Exclusions:</b>	
Sewer Assessments Receivable (As of 3/31/00)	( 2,494,975)
Estimated school construction grants receivable	<u>(23,505,937)</u>
<b>Net Direct Indebtedness</b>	<u>\$243,325,234</u>

1) Includes this issue; does not include authorized but unissued debt of \$26,374,698.

2) Includes Clean Water Fund PLO.

## History of Outstanding Indebtedness

The following table sets forth the total long-term bonded indebtedness, short-term and other indebtedness outstanding at the end of fiscal years 1990-2000:

<b>Fiscal Year Ending</b>	<b>Bonded Indebtedness</b>	<b>Short-Term and Other Indebtedness</b>	<b>Total Outstanding Indebtedness</b>
<u>June 30</u>			
2000	\$228,035,000	\$41,291,146	\$269,326,146
1999	243,800,000	2,865,155	246,665,155
1998	206,925,000	3,044,929	209,969,929
1997	165,575,000	42,378,052	207,953,052
1996	147,165,000	17,613,444	164,778,444
1995	157,655,000	2,718,553	160,373,553
1994	118,135,000	32,419,974	150,554,974
1993	129,085,000	16,107,939	145,192,939
1992	120,750,000	43,155,271	163,905,271
1991	137,180,000	20,590,725	157,770,725
1990	157,555,000	689,179	158,244,179

## Outstanding Short-Term Indebtedness

As of the date of this Official Statement, the City has no other outstanding short-term indebtedness except for \$3,590,785 related to the Clean Water Fund IFO.

## Overlapping and Underlying Indebtedness

The City has no overlapping or underlying indebtedness.

## Debt Ratios

The following table sets forth certain ratios relating to the City's indebtedness, giving effect to this financing, as of June 1, 2000:

	<u>Amount of Indebtedness</u>	<u>Per Capita</u> <sup>(1)</sup>	<u>Percentage Of Full Valuation</u> <sup>(2)</sup>
Gross Direct Indebtedness <sup>(3)</sup>	\$269,326,146	\$2,433.18	1.71%
Net Direct Indebtedness <sup>(3)</sup>	\$243,325,234	\$2,198.28	1.55%

### Notes:

- (1) The City's 1998 population was estimated at 110,689.
- (2) The October 1, 1998, estimated Equalized Net Grand List, i.e., estimated full valuation of taxable property, as developed by the State of Connecticut, Office of Policy and Management, was \$15,692,082,042.
- (3) See "Calculation of Net Direct Indebtedness" herein. For purposes of ratio analysis, net direct indebtedness excludes certain indebtedness because it is self-supporting.

## Future Capital Projects

The City expects to authorize additional capital expenditures of approximately \$28,000,000 to \$30,000,000 for the next two fiscal years and \$20,000,000 to \$25,000,000 for the following three fiscal years. The City anticipates that most of these costs will be funded through the issuance of debt.

### COMBINED SCHEDULE OF BONDED DEBT THROUGH MATURITY AS OF JUNE 1, 2000

<u>Fiscal Year</u>	<u>Principal Payments</u> <sup>(1,2)</sup>	<u>Interest Payments</u>	<u>Total Debt Service</u> <sup>(1,2)</sup>
1900-00	-	\$ 61,263	\$ 61,263
2000-01	18,540,000	12,697,746	31,237,746
2001-02	15,985,000	10,395,906	26,380,906
2002-03	15,945,000	9,605,873	25,550,873
2003-04	15,705,000	8,785,718	24,490,718
2004-05	15,645,000	7,967,963	23,612,963
2005-06	15,565,000	7,197,318	22,762,318
2006-07	14,265,000	6,343,466	20,608,466
2007-08	14,245,000	5,617,522	19,862,522
2008-09	14,220,000	4,879,553	19,099,553
2009-10	14,155,000	4,182,915	18,337,915
2010-11	11,390,000	3,439,372	14,829,372
2011-12	11,375,000	2,866,203	14,241,203
2012-13	11,355,000	2,293,953	13,648,953
2013-14	10,240,000	1,806,898	12,046,898
2014-15	9,865,000	1,244,257	11,109,257
2015-16	5,635,000	812,410	6,447,410
2016-17	5,635,000	537,906	6,172,906
2017-18	5,635,000	262,744	5,897,744
2018-19	2,635,000	62,581	2,697,581
	<u>\$228,035,000</u>	<u>\$91,061,567</u>	<u>\$319,096,567</u>

- (1) Does not include \$15,810,000 bond issue of 1996, \$8,415,000 bond issue of 1992, \$29,290,000 bond issue of 1995 and \$7,055,000 bond issue of 1996 which (the "Refunded Bonds") were included as part of a refunding bond issue in 1998. A portion of the proceeds of the refunding bonds were placed in escrow and will be used to pay at maturity or redeem the Refunded Bonds.
- (2) Does not include Clean Water Fund Loan of approximately \$2,700,361. See page 20.

Source: City of Stamford.

## CITY FINANCIAL DATA

### Accounting Policies

The City's accounting policies are summarized in Note 1 "Summary of Significant Accounting Policies" in the Notes to General Purpose Financial Statements, Appendix A, page A-11.

### Basis of Accounting

See Note 2 of Notes to General Purpose Financial Statements, Appendix A, page A-21.

### Audit

Pursuant to the provisions of the Municipal Auditing Act (Chapter 111 of the Connecticut General Statutes) and the City of Stamford Charter, the City is obligated to undergo an annual examination by an independent public accountant. The auditors, McGladrey & Pullen, were appointed by the Board of Finance, and are required to conduct their examination under the guidelines issued by the State of Connecticut, Office of Policy & Management, who receive a copy of the audit report when completed. The Audit report for the fiscal year ended June 30, 1999 was completed prior to December 31, 1999. See Appendix A herein.

### Budgetary Procedures

The City of Stamford conforms to the following budgetary sequences and time schedules:

Department estimates due for six year capital program	December 10
Report of the Director of Administration to Board of Finance recommending the Amount and nature of capital expenditures for the ensuing year	December 15
Certificate of Board of Finance to Planning Board of amount and nature of capital Expenditures for subsequent year	January 15
Public hearing by Planning Board	February 10
Capital Budget from Planning Board to Mayor	March 1
Board of Education submits its budget to the Board of Finance	March 8
Mayor's Operating and Capital budget to Board of Finance	March 8
Joint Public Hearing before Board of Finance and Board of Representatives	April 8
Budget to Board of Representatives from Board of Finance	April 20
Budget adopted by Board of Representatives	May 15
Board of Finance establishes the mill rate	May 25

## **Property Tax**

The maintenance of an equitable tax base and the location and appraisal of all real and personal property within the City for inclusion onto the Grand List is the responsibility of the Assessor's Office. The Grand List represents the total of assessed value for all taxable real and personal property located within the City on October 1, in accordance with Section 12-62a of the Connecticut General Statutes. A Board of Assessment Appeals determines whether adjustments to the Assessor's list on assessments under appeal are warranted. Assessments are computed at 70 percent of the market value.

When a new structure, or modification to an existing structure, is undertaken, the Assessor's Office receives a copy of the permit issued by the building inspector. A physical appraisal is then completed and the structure classified and priced from a schedule developed at the time of revaluation (Grand List of 1999). The property depreciation and obsolescence factors are also considered when arriving at an equitable value. The City completed a new revaluation for the October 1999 Grand List.

Motor vehicle lists are furnished to the City by the State of Connecticut and appraisals of motor vehicles are accomplished in accordance with an automobile price schedule developed by the Connecticut Association of Assessing Officials.

All personal property (furniture, fixtures, equipment, machinery and leased equipment) is assessed annually with manufacturers and businesses completing and returning to the Assessor's Office standard worksheets for computing value. An assessor's check and audit is completed periodically. Assessments for both personal property and motor vehicles are computed at 70 percent of present market value.

The City derived 83.6% of its annual revenues for fiscal year 1998-99 through property taxes. For fiscal year 1999-2000 the City budgeted 84.2% of its annual revenues from property taxes, and expects that a similar proportion of its total revenue will be generated from property taxes in the future.

## **Tax Districts**

The City of Stamford is divided into four taxing districts, based upon municipal services furnished. As the City's sewer program is extended to new areas, municipal garbage collection service is provided and the tax district classification is changed accordingly.

District A: Basic services (Schools, police, etc.) plus sanitary sewers, garbage collection and paid fire protection.

District B: Basic services plus paid fire protection.

District C: Basic services plus volunteer fire protection.

District C/S: Basic services plus volunteer fire protection, sanitary sewers, garbage collection

The core of the City is represented by Districts A and B which include the highest density of residential, commercial, and industrial development. District B is a very small portion of this core area to which sanitary sewers have not been extended.

Districts C and C/S are predominantly zoned for single-family residential use. District C/S is that portion of District C that has been provided with sanitary sewers and garbage collection.

In September 1999 the City of Stamford, pursuant to State law and local ordinance, adopted a uniform, State-recommended depreciation schedule for business and personal property. As a result of this new depreciation schedule,

which allows businesses to depreciate electronic data processing equipment much faster than had been previously permitted, Stamford businesses will enjoy a dramatic reduction in their assessments and corresponding taxes for electronic personal property, most notably computer equipment. Because of this change, however, the taxable value of all personal property in Stamford is dropping by \$215 million, or 24.1%. To date, the City of Stamford is the only municipality in Connecticut to adopt the new depreciation schedule. In order to partially mitigate the impact of this reduction in personal property taxes, the Fiscal Year 2000-2001 Operating Budget includes the creation of a Personal Property Tax District. The mill rate in this district would be established at the FY99-00 mill rate applicable to personal property, 28.64 mills. Over the succeeding three years, the City will phase-in any adjustments to this district's mill rate, such that ultimately the mill rate in the Personal Property Tax District will be the same as the District A rate for real property by FY 2003-2004.

### TAX RATES BY TAX DISTRICT

(Mills)

<u>Tax List</u>	<u>Fiscal Year</u>	<u>District A</u>	<u>District B</u>	<u>District C</u>	<u>District C/S</u>	<u>Uniform Auto Rate</u>
October 1, 1998	1999-00	28.64	27.84	26.00	26.79	30.90
October 1, 1997	1998-99	28.5	27.8	25.9	26.7	30.8
October 1, 1996	1997-98	28.1	27.3	25.6	26.4	30.3
October 1, 1995 <sup>(1)</sup>	1996-97	29.1	27.7	25.8	27.3	31.2
October 1, 1994	1995-96	31.8	30.2	27.9	29.4	30.3
October 1, 1993	1994-95	34.7	33.2	31.1	32.5	33.4
October 1, 1992	1993-94	38.8	37.1	35.1	36.8	37.6
October 1, 1991	1992-93	37.7	36.1	34.2	35.9	36.6
October 1, 1990	1991-92	37.6	35.9	33.6	35.3	36.3
October 1, 1989	1990-91	35.8	34.0	31.6	33.4	34.4

(1) The final year of a three year phase-in of revaluation.

### Revenues

The City derives its revenues from a direct tax levy on property, State and federal aid, various fees and charges, and certain miscellaneous sources. City revenues are summarized for fiscal years ended 1993-99 in "Statements of Revenues, Expenditures and Changes in Fund Balance - General Fund" herein. The prior year's appropriated surplus is also available to support current operating expenditures.

### Real Property Tax Collection Procedure

Taxes for the fiscal year paid on the grand list on the prior October 1, and are payable in two installments, one half on July 1 and one half on January 1. Payments not received by February 1 and August 1 become delinquent.

According to the provisions of Public Act No. 81-44, effective July 1, 1981, and applicable to property taxes due on or after said date, delinquent property taxes were subject to interest at the rate of 1.25% per month. Public Act No. 82-141, effective July 1, 1982, changed the interest rate to 1.5% per month for all delinquent property taxes.

### Real Property Tax Levies

Property taxes are levied on all assessed property on the Grand List of October 1 prior to the beginning of the fiscal year. At the discretion of the City and for the convenience of the taxpayer, tax bills are payable in two installments on July 1 and January 1. A margin against delinquencies, legal reductions, and Grand List adjustments, such as assessor errors, is provided by establishing a reserve for uncollected amounts when computing anticipated property tax revenue from the current levy. A modest estimate for delinquent taxes and outstanding interest and lien

fees anticipated to be collected during the fiscal year is normally included as a revenue item in the budget. Delinquent taxes are billed at least three times a year, with interest charged at the rate of one and one-half percent per month in accordance with Connecticut General Statutes, with a minimum charge of \$2. Outstanding Real Estate tax accounts are automatically liened each year prior to June 30 with legal demands and alias tax warrants used in the collection of personal property and motor vehicle tax bills. Real estate accounts and other accounts are transferred to suspense 15 years after the due date in accordance with State Statutes.

## TAX COLLECTIONS

The following table sets forth the amount of annual property tax levy and the tax collection record for the City for fiscal years 1990 through 1999 and as budgeted for fiscal year 2000:

<u>Fiscal Year Ended 6/30</u>	<u>Net Taxable Grand List (000)</u>	<u>Total Adjusted Tax Levy</u>	<u>Uncollected Taxes</u>		
			<u>End of Fiscal Year</u> <sup>(1)</sup>	<u>%</u>	<u>As of 3/31/00</u> <sup>(2)</sup>
2000	\$8,804,639	\$245,074,605	In Process	In Process	\$10,923,228
1999	8,651,402	237,368,900	6,904,427	2.90%	4,562,558
1998	8,551,301	232,266,554	\$5,851,707	2.52%	2,174,915
1997	8,423,264 <sup>(3)</sup>	237,799,962	6,875,535	2.90%	1,599,617
1996	8,375,711	229,606,190	6,451,619	2.83%	849,509
1995	8,355,432 <sup>(4)</sup>	222,495,000	6,226,725	2.80%	551,504
1994	6,038,948	224,694,989	7,830,621	3.49%	378,022
1993	6,021,443	220,178,895	9,723,705	4.42%	312,014
1992	6,041,200	219,080,157	8,823,915	4.13%	234,493
1991	5,997,131	206,372,732	9,728,436	4.71%	128,894
1990	5,849,557	192,787,582	7,934,466	4.12%	106,609

(1) The amount collected to the end of each fiscal year represents collections of twelve months. Taxes for the fiscal year are laid on the Grand List of October 1, and are due and payable in two installments, one-half July 1 and one-half January 1. Failure to pay an installment within one month of the installment due date makes the installment delinquent. Effective July 1, 1982 (P.A. 82-141 of the 1982 Connecticut General Assembly), if the installment is not paid by August 1, the tax becomes delinquent and a penalty of 1 ½% per month (18% per annum) is charged from the due date on the tax. Real Estate is liened for delinquent taxes within one year after the due date.

(2) Unaudited figures.

(3) Final year of phase-in net taxable grand list. The City phased in revaluation over three years.

(4) First year of phase-in net taxable grand list.

Source: City of Stamford, Tax Collector's Office.

## TAXABLE GRAND LIST

The following table sets forth the City's taxable grand list by component:

<u>Grand List As of 10/1</u>	(\$ in Thousands)					<u>Net Taxable Grand List</u>
	<u>Real Estate Property</u>	<u>Personal Property</u>	<u>Motor Vehicle Property</u>	<u>Taxable Grand List</u>	<u>Less Exemptions</u>	
1999 <sup>(1)(2)</sup>	\$9,367,6746	\$671,395	\$685,816	\$10,724,8854	\$62,169	\$10,662,716
1998	7,359,485	889,814	605,034	8,854,333	50,736	8,803,597
1997	7,374,724	758,771	559,895	8,693,874	54,102	8,639,272
1996	7,378,257	664,125	537,226	8,579,608	28,307	8,551,301
1995 <sup>(3)</sup>	7,329,552	612,652	504,969	8,447,173	23,909	8,423,264
1994	7,315,179	618,865	450,928	8,384,972	9,261	8,375,711
1993 <sup>(4)</sup>	7,327,522	641,294	395,734	8,364,550	9,118	8,355,432
1992 <sup>(5)</sup>	5,040,021	669,669	338,356	6,048,046	9,098	6,038,948
1991	5,037,379	682,693	327,767	6,047,829	26,386	6,021,443
1990	5,010,393	698,191	344,197	6,052,781	11,581	6,041,200
1989	4,975,145	698,852	334,905	6,008,902	11,771	5,997,131
1988	4,901,277	638,848	321,505	5,861,630	12,073	5,849,557

(1) Real Estate values reflect the recently completed revaluation.

(2) The reduction in Personal Property is due to the adoption of uniform depreciation schedules.

(3) Final year of phase-in net taxable grand list. The City phased in revaluation over three years.

(4) First year of phase-in net taxable grand list.

(5) Net taxable grand list before revaluation.

The following table sets forth the Real Estate Property portion of the City's taxable grand list by component:

(\$ in Thousands)

<u>Grand List As of 10/1</u>	<u>Residential Real Property</u>	<u>Commercial &amp; Industrial Real Property</u>	<u>All Land</u>	<u>Total Real Estate</u>
1999	\$6,017,819	\$3,347,063	\$2,792	\$9,367,674
1998	4,934,318	2,422,220	2,948	7,359,486
1997	4,881,225	2,490,536	2,943	7,374,704
1996	4,853,998	2,521,304	2,955	7,378,257
1995	4,833,586	2,493,011	2,955	7,329,552
1994	4,819,746	2,492,985	2,448	7,315,179
1993	4,789,207	2,526,872	2,443	7,327,522
1992	2,855,017	2,183,135	1,869	5,040,021
1991	2,842,622	2,192,884	1,862	5,037,379
1990	2,839,514	2,169,017	1,862	5,010,393
1989	2,827,760	2,145,524	1,861	4,975,145
1988	2,796,441	2,102,975	1,861	4,901,277

#### LARGEST TAXPAYERS

The following table sets forth the twenty largest taxpayers in the City per the Grand List dated October 1, 1999:

<u>Business Name</u>	<u>Nature of Business</u>	<u>Total Estimated Assessment</u>
Swiss Bank Corp./UBS AG Stamford	Banking/Finance	\$157,634,750
EOP-Stamford Atlantic Forum LLC	Office Buildings	88,101,440
Pitney Bowes	Office Equipment	84,082,380
General Electric Capital Corporation	Consumer Finance	81,557,850
First Stamford Place	Office Building	72,921,840
Rich-Taubman Associates	Office Buildings/Retail	71,981,000
Connecticut Light & Power	Utility	67,816,370
Reckson Operating Partnership LLP	Office Buildings	62,371,710
Champion International	Corporate Office	53,921,370
SLT Realty LTD Partnership	Hotels	53,269,230
Purdue Realty LP	Corporate Office	52,131,170
Harbor Vista Associates	Office Building	50,726,350
High Ridge Park Associates	Office Building	48,538,070
Clairol, Inc.	Cosmetics/Manufacturing	48,240,440
Stamford Associates	Office Buildings	47,182,100
Harbor Park Associates	Office Buildings	46,312,010
Stamford Ridgeway Association Ltd.	Office/Retail	39,826,180
Reckson/Stamford Towers LLC	Office Buildings	39,546,150
Avalon Bay Communities Inc.	Apartment Buildings	39,241,560
Hyperion Software Corp.	Office Building	38,980,700
<b>TOTAL</b>		<u>\$1,244,382,670</u> <sup>(1)</sup>

(1) Represents 11.62% of the net taxable grand list of \$10,704,487,249 dated October 1, 1999.

Source: City of Stamford, Assessor's Office.

## State And Federal Aid

The City is partially dependent upon financial assistance from the State and Federal government, which comes primarily in the form of grants for City operations and education. For fiscal year 1998-99 the City received 6.14% of its general fund revenues from grants, and for the current fiscal year the City has budgeted 6.62% of its revenues from such grants.

The following table sets forth the percentage of City General Fund revenues comprised of State and Federal aid for each of the fiscal years ended 1991-99, and as estimated for the 2000 fiscal year.

	<u>Fiscal Year</u>	<u>General Fund Revenues</u>	<u>Federal and State Aid</u>	<u>Federal and State Aid as a Percentage of General Fund Revenues</u>
Preliminary	2000	\$283,912,876	\$18,797,100	6.62%
	1999	277,467,381	17,043,533	6.14%
	1998	279,925,825	17,615,684	6.29%
	1997	298,760,652	21,406,212	7.17%
	1996	276,538,567	19,986,710	8.35%
	1995	265,768,409	22,087,418	8.31%
	1994	270,346,924	19,404,697	7.17%
	1993	262,978,270	19,518,163	7.42%
	1992	264,732,393	22,772,135	8.60%
	1991	258,472,243	28,057,544	10.85%

*Source: Annual audited financial statements; Director of Administration; 1999-00 fiscal year budget.*

## EXPENDITURES

The City's major expenditure is for education. Forty-four percent of fiscal year 1998-99 General Fund expenditures were for that purpose. Other major expenditures and their percentages were estimated at: public safety, health and welfare, 21.85%; employee benefits, and other operating expenses, 15.06%; office of operations, 11.57%, and debt service, 7.52%. City expenditures are summarized for Fiscal Years ended June 30, 1995 through 1999 in "Statements of Revenues, Expenditures and Changes in Fund Balance - General Fund" herein.

## FINANCIAL STATEMENTS AND AUDITORS

The City maintains independent public accountants McGladrey & Pullen, LLP, New Haven, Connecticut. The most recent audit report covers the fiscal year ended June 30, 1999. Included in this Official Statement and made part hereof as Appendix "A" are the "General Purpose Financial Statements of the City of Stamford, Connecticut," as of June 30, 1999, together with the report hereon rendered by McGladrey & Pullen, LLP, independent public accountants.

CITY OF STAMFORD, CONNECTICUT

**STATEMENT OF REVENUES, EXPENDITURES, ENCUMBRANCES AND CHANGES IN UNRESERVED FUND BALANCES — BUDGET AND ACTUAL — BUDGETARY BASIS — GENERAL FUND**  
**For the Year Ended June 30, 1999**

	<u>General Fund</u>		
	<u>Revised Budget</u>	<u>Actual</u>	<u>Variance Favorable (Unfavorable)</u>
<b>REVENUES</b>			
Property taxes, interest and liens, net	\$237,120,486	\$233,707,597	\$(3,412,889)
Intergovernmental	17,203,217	17,043,533	(159,684)
Charges for services	14,626,408	13,849,258	(777,150)
Interest and dividends	5,900,000	6,260,748	360,748
Other	2,132,784	6,911,142	4,778,358
<b>Total Revenues</b>	<u>276,982,895</u>	<u>277,772,278</u>	<u>789,383</u>
<b>EXPENDITURES AND ENCUMBRANCES</b>			
Government Services	2,389,148	2,245,680	143,468
Administration	4,747,651	4,608,175	139,476
Legal Affairs	21,710,849	21,355,400	355,449
Public Safety, Health and Welfare	57,131,224	55,919,731	1,211,493
Community Services	7,534,073	7,548,284	(14,211)
Operations	34,761,332	33,030,543	1,730,789
Board of Education	131,292,369	131,074,758	217,611
Contingency	1,527,031	-	1,527,031
<b>Total expenditures and encumbrances</b>	<u>261,093,677</u>	<u>255,782,571</u>	<u>5,311,106</u>
<b>Revenues over (under) expenditures and encumbrances</b>	15,889,218	21,989,707	6,100,489
<b>OTHER FINANCING SOURCES (USES)</b>			
Operating transfers (out)	<u>(21,031,142)</u>	<u>(21,074,142)</u>	<u>(43,000)</u>
<b>Revenues and other financing sources over (under) expenditures and encumbrances</b>	(5,141,924)	915,565	6,057,489
Application of designated fund balance	<u>1,721,210</u>	<u>1,721,210</u>	<u>-</u>
<b>Increase in fund balance</b>	<u>(3,420,714)</u>	2,636,775	<u>6,057,489</u>
<b>Unreserved fund balance at beginning of year</b>		<u>7,688,745</u>	
<b>Unreserved fund balance at end of year</b>		<u>\$10,325,520</u>	

See Notes to Financial Statements.

## COMPARATIVE BALANCE SHEETS

### GENERAL FUND

Fiscal Year Ended June 30

	<u>1995</u>	<u>1996</u>	<u>1997</u>	<u>1998</u>	<u>1999</u>
<b>ASSETS</b>					
Cash and cash equivalents:	\$27,125,488	\$32,722,779	\$44,886,286	\$47,271,577	\$40,107,498
Property taxes & sewer assessments	15,955,166	15,947,108	18,098,311	10,726,000	11,918,210
Intergovernmental	3,008,166	3,121,090	3,302,966	1,965,468	1,923,917
Other receivables	1,191,713	1,826,783	1,785,245	159,652	297,935
Due from other funds	524,373	62,400	21,814	334,822	731,412
Inventory	9,028	54,733	12,187	26,702	-
Other assets	15,077	273,718	273,670	-	-
<b>TOTAL ASSETS</b>	<b>\$47,829,011</b>	<b>\$54,008,611</b>	<b>\$68,380,479</b>	<b>60,484,221</b>	<b>54,978,972</b>
<b>LIABILITIES AND FUND BALANCES</b>					
<b>LIABILITIES</b>					
Accounts payable	\$23,985,059	\$32,599,589	\$27,436,358	\$22,879,453	\$16,722,812
Bank overdrafts	1,438,806	2,465,246	1,842,429	-	-
Deferred revenues	17,119,332	18,783,423	24,351,949	13,408,943	18,716,568
Due from other governments/units	-0-	-0-	439,295	-	-
Due to other funds	82,494	63,300	3,000,000	2,712,885	1,335,051
<b>TOTAL LIABILITIES</b>	<b>42,625,691</b>	<b>53,911,558</b>	<b>57,070,031</b>	<b>39,001,281</b>	<b>36,774,431</b>
<b>FUND BALANCES</b>					
Fund equity comprised of:					
Encumbrances	3,044,355	855,665	7,849,561	11,818,792	7,624,828
Inventory	9,027	54,733	12,187	26,702	26,703
Debt Service	228,870	225,810	227,490	227,491	227,490
Other purposes	15,077	-0-	-0-	-	-
Total reserved fund balance	3,297,329	1,136,208	8,089,238	12,072,985	7,879,021
Unreserved fund balance:					
Designated by charter for:					
Fiscal 1995 appropriations	-0-	-0-	-0-	-0-	-0-
Fiscal 1996 appropriations	1,070,317	-0-	-0-	-0-	-0-
Fiscal 1997 appropriations	835,674	835,674	-0-	-0-	-0-
Fiscal 1998 appropriations	-0-	(1,874,829)	1,500,000	-0-	-0-
Fiscal 1999 appropriations	-0-	-0-	1,721,210	1,721,210	-0-
Fiscal 2000 appropriations				7,688,745	7,688,745
Fiscal 2001 appropriations					2,636,775
Total unreserved fund balance	1,905,991	(1,039,155)	3,221,210	9,409,955	10,325,520
<b>TOTAL FUND EQUITY</b>	<b>5,203,320</b>	<b>97,053</b>	<b>11,310,448</b>	<b>21,482,940</b>	<b>18,204,541</b>
<b>TOTAL EQUITY &amp; OTHER CREDITS</b>	<b>5,203,320</b>	<b>97,053</b>	<b>11,310,448</b>	<b>21,482,940</b>	<b>18,204,541</b>
<b>TOTAL LIABILITIES &amp; FUND EQUITY</b>	<b>\$47,829,011</b>	<b>\$54,008,611</b>	<b>\$68,380,479</b>	<b>60,484,221</b>	<b>54,978,972</b>

Source: Annual audited financial statements.

**STATEMENT OF REVENUES, EXPENDITURES AND CHANGES IN FUND BALANCE**

**GENERAL FUND  
(GAAP BASIS)**

**Fiscal Years Ended June 30**

	<u>1995</u>	<u>1996</u>	<u>1997</u>	<u>1998</u>	<u>1999</u>
<b>REVENUES</b>					
General property taxes	\$225,993,754	\$231,017,815	\$238,807,331	\$234,697,942	\$233,707,597
Less: Deferred	(2,190,088)	(904,923)	-0-	-0-	-0-
Allowance for uncollectables	(4,915,380)	(4,775,546)	-0-	-0-	-0-
Intergovernmental	22,087,418	19,986,710	21,406,212	17,615,684	17,043,533
Charges for services	19,177,583	21,109,217	21,524,888	14,175,736	13,239,490
Interest and dividends	3,767,920	4,335,134	4,680,277	6,619,977	6,260,748
Other	1,847,202	5,770,160	12,341,944	6,816,486	7,216,013
<b>TOTAL REVENUES</b>	<b>265,768,409</b>	<b>276,538,567</b>	<b>298,760,652</b>	<b>279,925,825</b>	<b>277,467,381</b>
<b>EXPENDITURES</b>					
Government services	-0-	-0-	2,795,463	2,354,557	2,224,727
Administration	-0-	-0-	3,634,152	4,229,583	4,658,776
Legal Affairs	-0-	-0-	28,939,064	25,430,090	21,563,371
Public safety, health & welfare	-0-	-0-	62,416,040	51,668,787	55,965,866
Community services	-0-	-0-	7,400,713	8,686,002	7,541,843
Operations	-0-	-0-	33,058,979	30,051,782	34,395,845
Board of education	-0-	-0-	121,263,657	123,679,583	129,471,725
State payment to teacher's retirement system	-0-	-0-	4,601,000	5,053,000	5,757,000
Boards and commissions	1,705,786	2,088,991	-0-	-0-	-0-
General government	29,769,182	30,768,974	-0-	-0-	-0-
Public works	25,750,807	32,107,377	-0-	-0-	-0-
Police and fire	45,318,527	50,386,439	-0-	-0-	-0-
Health and welfare	16,163,103	14,875,508	-0-	-0-	-0-
Parks and recreation	4,439,688	4,651,434	-0-	-0-	-0-
Community services	7,025,800	8,120,594	-0-	-0-	-0-
Board of education	115,153,846	117,601,760	-0-	-0-	-0-
Retroactive settlements	(441,592)	-0-	-0-	-0-	-0-
City Labor Contract	572,659	-0-	-0-	-0-	-0-
Other	946,053	940,766	-0-	-0-	-0-
Debt service: principal	11,328,454	10,546,900	11,826,694	9,845,407	-0-
Interest	8,078,929	9,931,475	9,665,473	7,885,869	-0-
<b>TOTAL EXPENDITURES</b>	<b>265,811,242</b>	<b>282,020,218</b>	<b>285,601,235</b>	<b>269,774,926</b>	<b>261,579,153</b>
<b>EXCESS (DEFICIENCY) OF REVENUES OVER (UNDER)</b>					
<b>EXPENDITURES</b>	(42,833)	(5,481,651)	13,159,417	10,150,899	15,888,228
<b>OTHER FINANCING SOURCES (USES)</b>					
Transfers in	614,539	408,958	476,014	1,028,881	2,048,768
Transfers (out)	-0-	(18,497)	(2,422,036)	1,007,288	(21,215,395)
<b>TOTAL OTHER FINANCING SOURCES (USES)</b>	<b>614,539</b>	<b>390,461</b>	<b>(1,946,022)</b>	<b>21,593</b>	<b>(19,166,627)</b>
<b>EXCESS OF REVENUES AND OTHER SOURCES OVER (UNDER) EXPENDITURES AND OTHER USES</b>					
Equity balance, July 1	4,631,614	5,203,320	97,053	11,310,448	21,482,940
Adjustment to prior year fund balance	-0-	(15,077)	-0-	-0-	-0-
Fund balance, June 30	<u>\$5,203,320</u>	<u>\$97,053</u>	<u>\$11,310,448</u>	<u>\$21,482,940</u>	<u>\$18,204,541</u>

Note: Under charter revision, Fiscal Year 1996-97 required revision of the City chart of accounts.

Source: Annual audited financial statements.

## COMPARATIVE BALANCE SHEETS

### CAPITAL PROJECTS FUND

Fiscal Years Ended June 30

<b>ASSETS</b>	<b><u>1995</u></b>	<b><u>1996</u></b>	<b><u>1997</u></b>	<b><u>1998</u></b>	<b><u>1999</u></b>
Cash and cash equivalents	\$14,391,289	\$7,581,217	\$38,985,461	\$11,269,854	\$29,554,413
Other receivables	-0-	-0-	-0-		
Investments	-0-	-0-	-0-		
Due from other funds	14,927	-0-	2,400,000	600,000	
Due from other governments	594,753	1,601,251	2,105,991	613,416	1,200,000
<b>TOTAL ASSETS</b>	<b><u>\$15,000,969</u></b>	<b><u>\$9,182,468</u></b>	<b><u>\$43,491,452</u></b>	<b><u>\$12,483,270</u></b>	<b><u>\$30,754,919</u></b>
<b>LIABILITIES AND FUND BALANCE</b>					
<b>LIABILITIES</b>					
Accounts payable	\$2,832,406	\$4,057,221	\$2,417,498	\$2,356,875	\$2,669,852
Bank overdrafts	-0-	-0-	-0-	-0-	-0-
Due to other funds	237,176	40,000	-0-	-0-	-0-
Bond anticipation notes	-0-	15,000,000	40,000,000	-0-	0-
Deferred revenue	278,534	792,353	-0-	199,642	145,058
Deposits and contract retainage	934,931	758,553	1,167,995	1,738,096	3,959,175
<b>TOTAL LIABILITES</b>	<b><u>4,283,047</u></b>	<b><u>20,648,127</u></b>	<b><u>43,585,493</u></b>	<b><u>4,294,613</u></b>	<b><u>3,959,175</u></b>
<b>FUND EQUITY:</b>					
Reserved for encumbrance				13,626,383	12,445,153
Undesignated	10,717,922	(11,465,659)	(94,041)	(5,437,726)	14,350,591
<b>TOTAL FUND EQUITY</b>	<b><u>10,717,922</u></b>	<b><u>(11,465,659)</u></b>	<b><u>(94,041)</u></b>	<b><u>8,188,657</u></b>	<b><u>26,795,744</u></b>
<b>TOTAL LIABILITIES &amp; FUND EQUITY</b>	<b><u>\$15,000,969</u></b>	<b><u>\$9,182,468</u></b>	<b><u>\$43,491,452</u></b>	<b><u>\$12,483,270</u></b>	<b><u>\$30,754,919</u></b>

Source: Annual audited financial statements.

**STATEMENT OF REVENUES, EXPENDITURES AND CHANGES IN FUND BALANCE**  
**CAPITAL PROJECTS FUND**  
**Fiscal year ended June 30**

	<u>1995</u>	<u>1996</u>	<u>1997</u>	<u>1998</u>	<u>1999</u>
<b>REVENUES</b>					
Interest and dividends	\$ 587,217	\$ 496,769	\$ 476,014	\$101,826	\$160,082
Intergovernmental	1,185,000	1,842,297	7,655,344	3,365,210	6,639,234
Other	2,600	-0-	-0-	-0-	-0-
<b>TOTAL REVENUES</b>	<u>1,774,817</u>	<u>2,339,066</u>	<u>8,131,358</u>	<u>3,467,036</u>	<u>6,799,316</u>
<b>EXPENDITURES</b>					
Capital Outlay	<u>21,167,572</u>	<u>24,218,572</u>	<u>29,548,006</u>	<u>46,867,143</u>	<u>38,204,029</u>
<b>TOTAL EXPENDITURES</b>	<u>21,167,572</u>	<u>24,218,572</u>	<u>29,548,006</u>	<u>46,867,143</u>	<u>38,204,029</u>
Revenues over (under) Expenditures	<u>(19,392,755)</u>	<u>(21,879,506)</u>	<u>(21,416,648)</u>	<u>(43,400,107)</u>	<u>(31,404,713)</u>
<b>OTHER FINANCING SOURCES</b>					
Proceeds from sale of land				1,082,805	11,800
Proceeds of general obligations bonds	50,000,000	-0-	30,000,000	50,000,000	50,000,000
Proceeds from State of Connecticut loan	397,000	104,883	864,280	-0-	-0-
Operating transfers in	-0-	650,000	2,400,000	600,000	2,000,000
Operating transfers (out)	<u>(702,558)</u>	<u>(1,058,958)</u>	<u>(476,014)</u>	<u>                    </u>	<u>(2,000,000)</u>
<b>TOTAL OTHER FINANCING SOURCES (USES)</b>	<u>\$49,694,442</u>	<u>\$(304,075)</u>	<u>\$32,788,266</u>	<u>\$51,682,805</u>	<u>\$50,011,800</u>
Excess (deficiency) of Revenues & Other Financing					
Sources Over (Under) Expenditures & Other Financing Uses	<u>30,301,687</u>	<u>(22,183,581)</u>	<u>11,371,618</u>	<u>8,282,698</u>	<u>18,607,087</u>
Equity balance, July 1	<u>(19,583,765)</u>	<u>10,717,922</u>	<u>(11,465,659)</u>	<u>(94,041)</u>	<u>8,188,657</u>
Equity balance, June 30	<u>\$10,717,99</u>	<u>\$(11,465,659)</u>	<u>\$(94,041)</u>	<u>\$8,188,657</u>	<u>\$26,795,744</u>

Source: Annual audited financial statements; City budget office.

## COMPARATIVE BALANCE SHEETS

### SPECIAL REVENUE FUND Fiscal Year Ended June 30

	<u>1995</u>	<u>1996</u>	<u>1997</u>	<u>1998 (1)</u>	<u>1999</u>
<b>ASSETS</b>					
Cash and cash equivalent	\$2,041,680	\$908,242	\$495,908	\$3,883,060	\$4,461,569
Due from other funds	67,567	-0-	600,000	184,911	-0-
Due from other governments	436,622	273,405	229,271	524,876	982,038
Taxes and sewer assessments	22,399	-0-	-0-	3,173,496	3,129,171
Other receivables	587,737	931,564	1,008,520	3,137,069	5,557,967
Other assets	18,098	3,352	4,143	-0-	-0-
Inventories	-0-	19,421	19,421	25,652	23,984
<b>TOTAL ASSETS</b>	<u>\$3,174,103</u>	<u>\$2,135,984</u>	<u>\$2,357,263</u>	<u>10,929,064</u>	<u>14,154,729</u>
<b>LIABILITIES AND FUND EQUITY</b>					
<b>LIABILITIES</b>					
Accounts payable	2,054,001	745,685	548,914	1,165,758	1,617,041
Deposits and retainage	14,305	-0-	-0-	-0-	-0-
Due to other funds	287,197	22,400	21,814	1,965,468	1,832,302
Deferred revenue	575,695	1,242,471	921,812	4,813,954	6,914,172
Due to other governments	9,988	9,018	9,201	-0-	-0-
<b>TOTAL LIABILITIES</b>	<u>2,941,186</u>	<u>2,019,574</u>	<u>1,501,741</u>	<u>7,945,180</u>	<u>10,363,515</u>
<b>FUND EQUITY</b>					
Fund equity comprised of:					
Encumbrances	704,650	505,990	569,110	984,239	1,295,915
Inventory	-0-	-0-	-0-	25,652	-0-
Other purposes	-0-	-0-	-0-	-0-	-0-
Total reserved fund balance	<u>704,650</u>	<u>505,990</u>	<u>569,110</u>	<u>1,009,891</u>	<u>1,295,915</u>
Unreserved fund balance:					
Undesignated	<u>(471,733)</u>	<u>(389,580)</u>	<u>286,412</u>	<u>1,973,993</u>	<u>2,495,299</u>
<b>TOTAL FUND EQUITY</b>	<u>232,917</u>	<u>116,410</u>	<u>855,522</u>	<u>2,983,884</u>	<u>3,791,214</u>
<b>TOTAL LIABILITIES &amp; FUND EQUITY</b>	<u>\$3,174,917</u>	<u>\$2,135,984</u>	<u>\$2,357,263</u>	<u>\$10,929,064</u>	<u>\$14,154,729</u>

(1) In FY97-98, Water Pollution Control and the Smith House were moved out of the general fund.

Source: Annual audited financial statements; City budget office.

## STATEMENTS OF REVENUES, EXPENDITURES AND CHANGES IN FUND BALANCE

### SPECIAL REVENUE FUND Fiscal Year Ended June 30

	<u>1995</u>	<u>1996</u>	<u>1997</u>	<u>1998</u>	<u>1999</u>
<b>REVENUES</b>					
Charges for services	\$1,471,123	\$1,332,994	\$1,469,584	\$21,803,486	\$23,795,903
Taxation	434,405	-0-	-0-	949,436	854,358
Intergovernmental	4,032,849	3,678,646	4,355,599	13,161,954	18,951,049
Interest and dividends	130,591	22,910	26,580	35,405	36,032
Miscellaneous	188,907	255,528	-0-	164,081	55,071
<b>TOTAL REVENUES</b>	<u>6,257,875</u>	<u>5,290,078</u>	<u>5,851,763</u>	<u>36,114,362</u>	<u>43,692,413</u>
<b>EXPENDITURES</b>					
Debt Service				3,891,913	3,811,443
Program	6,590,391	5,151,230	5,498,875	29,690,383	37,154,125
<b>TOTAL EXPENDITURES</b>	<u>6,590,391</u>	<u>5,151,230</u>	<u>5,498,875</u>	<u>33,582,296</u>	<u>40,965,568</u>
Revenues over (under) Expenditures	<u>(332,516)</u>	<u>138,848</u>	<u>352,888</u>	<u>2,532,066</u>	<u>2,726,845</u>
<b>OTHER FINANCING SOURCES</b>					
Operating transfers in	-0-	-0-	-0-	184,911	219,052
Operating transfers (out)	(13,412)	-0-	-0-	(588,615)	(2,138,567)
<b>TOTAL OTHER FINANCING SOURCES (USES)</b>	<u>(13,412)</u>	<u>-0-</u>	<u>-0-</u>	<u>(403,704)</u>	<u>(1,919,515)</u>
Excess of Revenues and Other Sources, Over (Under) Expenditures & Other Financing Uses	<u>(345,928)</u>	<u>138,848</u>	<u>352,888</u>	<u>2,128,362</u>	<u>807,330</u>
Equity balance, July 1	<u>578,845</u>	<u>(22,438)</u>	<u>502,634</u>	<u>855,522</u>	<u>2,893,884</u>
Equity balance, June 30	<u>\$232,917</u>	<u>\$116,410</u>	<u>\$855,522</u>	<u>2,983,884</u>	<u>3,791,214</u>

Source: Annual audited financial statements.

## EMPLOYEE PENSION SYSTEMS

The City's pension plans cover all employees of the City, except teachers, who are covered by the State Teachers Retirement Fund. There are four separate plans: Classified Employees' Retirement Fund; Firefighters Pension Trust Fund; Police Pension Trust Fund; and the Custodians' Retirement Fund. The Buck Consultants of Stamford, Connecticut, are the consulting actuaries for the City.

The City's funding policy is to appropriate and recognize as an expenditure the amounts recommended by an actuary that are adequate to accumulate sufficient assets in each of the City's Plans to pay benefits when due. These amounts include normal cost and amortization of prior service costs over a period of 40 years. The City uses the projected unit credit actuarial funding method utilizing the same actuarial assumptions as described in Appendix A, pages A-21-27, "Notes to General Purpose Financial Statements" in this Official Statement.

The following is a schedule of the total funding progress by the City to all City pension plans:

### CITY'S SCHEDULE OF FUNDING PROGRESS <sup>(1)</sup>

#### (TOTAL ALL PLANS)

	<b>Actuarial Value Of Assets</b>	<b>Actuarial Accrued Liability</b>	<b>Funded Ratio</b>	<b>Unfunded Actuarial Accrued Liability</b>
1998-99	\$401,702,000	\$329,098,000	122%	\$(72,604,000)
1997-98	361,008,000	316,065,000	114%	(44,943,000)
1996-97	323,970,000	294,815,000	110%	(29,155,000)
1995-96	294,758,000	270,692,000	109%	(24,066,000)
1994-95	269,360,000	253,182,000	106%	(16,178,000)
1993-94	250,077,000	250,892,000	100%	815,000
1992-93	235,218,000	227,183,000	104%	(8,035,000)
1991-92	217,724,000	215,991,000	101%	(1,733,000)

(1) Based on the valuation completed by Buck Consultants.

### Self-Insurance Program

In response to municipal insurance market conditions, the City periodically evaluates its self-insurance levels. In response to the soft insurance market, in July 1998, the City reduced its SIR from \$750,000 per occurrence to \$250,000 per occurrence. The City also added a \$750,000 aggregate stop loss over general liability, automobile, law enforcement and public officials' liability. In 1997, City converted from an insured life and health insurance program to a consolidated self-insured retention (SIR) administrative services coverage program. At the same time the City instituted a managed care component in its employee health program.

### LEGAL REQUIREMENTS FOR APPROVAL OF BORROWING

The City has the power to incur indebtedness by issuing its bonds or notes as authorized by the General Statutes of the State of Connecticut subject to statutory debt limitations and the requirements of the City Charter for the authorization of indebtedness.

## **LITIGATION**

In the opinion of the City's Director of Legal Affairs, as of the date of this Official Statement, there are no claims or litigation pending or to his knowledge threatened, which would individually or in the aggregate result in final judgments against the City which would have a material adverse effect on the finances of the City or which would impact the validity of the Notes or the power of the City to levy and collect taxes to pay them.

## **QUALIFICATION FOR FINANCIAL INSTITUTIONS**

The Notes SHALL NOT be designated by the City as qualified tax exempt obligations under the provisions of Section 265(b) of the Internal Revenue Code of 1986, as amended, for purposes of the deduction by financial institutions for interest expense allocable to the Notes.

## **INVESTMENT POLICIES AND PRACTICES**

The City Charter and Connecticut General Statutes Sections 7-400, as amended by Public Act 94-190, 7-401 and 7-402 govern the investments the City is permitted to acquire. Generally, the City may invest in certificates of deposit, repurchase agreements, municipal notes and bonds, obligations of the United States of America, including joint and several obligations of the Federal Home Loan Mortgage Association, The Federal Savings and Loan Insurance Corporation, obligations of the United States Postal Service, all the Federal Home Loan Banks, all Federal Land Banks, the Tennessee Valley Authority, or any other agency of the United States government, certain mutual funds and money market mutual funds.

The City's investment practices have been to invest only in certificates of deposit, repurchase agreements, the State of Connecticut Short-Term Investment Fund (STIF), MBIA Class Investment Fund, the State of Connecticut Tax-Exempt Proceeds Fund, and United States Treasury Bills. The City has followed these investment practices and the City's operating funds and capital funds are currently invested in the following short-term investments: (1) various certificates of depository with Connecticut banks; (2) the State of Connecticut Short-Term Investment fund; (3) the State of Connecticut Tax-Exempt Proceeds fund; (4) United States Treasury Bills; and (5) MBIA Class (an investment fund managed by MBIA Municipal Bond Investors Service Corporation, which, according to MBIA Class, invests only in (i) high-grade short-term federal securities and variable rate obligations backed by federal agencies having monthly or quarterly resets based on indices like the prime rate, LIBOR, or a combination of the two, and (ii) very short-term (usually overnight) repurchase agreements secured by high quality collateral which is valued daily and fully delivered to the Program's custodial bank to be held for the benefit of the Plan's participants.

## **AVAILABILITY OF CONTINUING DISCLOSURE INFORMATION**

The City of Stamford prepares, in accordance with State law, annual audited financial statements and files such annual audits with the State Office of Policy and Management within six months of the end of its fiscal year. The City provides to Moody's Investors Service, Inc. and Standard and Poor's Rating Service ongoing disclosure in the form of the Comprehensive Annual Financial Report, Recommended and Adopted Budgets, and other materials relating to its management and financial condition, as may be necessary or requested.

In accordance with the requirements of Rule 15c2-12(b)(5) promulgated by the Securities and Exchange Commission, the City will agree to provide, or cause to be provided, notices of material events with respect to the Notes pursuant to a Continuing Disclosure Agreement to be executed in substantially the form attached as Appendix C to this Official Statement.

The City has previously undertaken in continuing disclosure agreements entered into for the benefit of holders of certain of its general obligation bonds and notes to provide certain annual financial information and event notices

pursuant to Rule 15c2-12(b)(5). To date the City has not failed to meet any of its undertakings under such agreements.

### **BOND RATINGS**

The City's Notes are currently rated MIG 1 by Moody's Investors Service ("Moody's") and SP-1+ by Standard & Poors Corporation ("S&P"). Such ratings reflect only the views of such organizations and an explanation for the significance of such ratings may be obtained from said agencies. There is no assurance that such ratings will continue for any given period of time or that they will not be revised or withdrawn entirely, if in the judgment of said agencies, circumstances so warrant. A revision or withdrawal of such ratings may have an effect on the market price of the City's bonds and notes.

### **TAX EXEMPTION**

The Internal Revenue Code of 1986, as amended (the "Code"), imposes certain requirements which must be met subsequent to delivery of the Notes in order that interest on the Notes remain excluded from gross income for federal income tax purposes. Noncompliance with such requirements could cause interest on the Notes to be included in gross income retroactive to the date of issuance of the Notes. The Tax Regulatory Agreement, which will be executed and delivered by the City concurrently with the Notes, contains representations, covenants and procedures relating to the use, expenditure and investment of proceeds of the Notes in order to comply with such requirements of the Code. Pursuant to the Tax Regulatory Agreement, the City also covenants and agrees that it shall perform all things necessary or appropriate under any valid provision of law to ensure interest on the Notes shall be excluded from gross income for federal income tax purposes under the Code.

In the opinion of Bond Counsel, based on existing statutes and court decision and assuming continuing compliance by the City with its covenant and the procedures contained in the Tax Regulatory Agreement, interest on the Notes is excluded from gross income for federal income tax purposes and is not treated as an item of tax preference or purposes of computing the federal alternative minimum tax. Interest on the Notes is, however, includable in adjusted current earnings for purposes of computing the alternative minimum tax on certain corporations.

Ownership of the Notes may also result in certain collateral federal income tax consequences to certain taxpayers, including, without limitation, financial institutions, property and casualty insurance companies, certain foreign corporations doing business in the United States, certain S corporations with excess passive income, individual recipients of Social Security and Railroad Retirement benefits, taxpayers utilizing the earned income credit and taxpayers who have or are deemed to have incurred indebtedness to purchase or carry tax exempt obligation, such as the Notes. Prospective purchasers of the Notes, particularly those who may be subject to special rules, are advised to consult their own tax advisors regarding the federal tax consequences of ownership and disposition of, or receipt of interest on, the Notes.

In the opinion of Bond Counsel, based on existing statutes, interest on the Notes is excluded from Connecticut taxable income for purposes of the Connecticut income tax on individuals, trust and estates, and is excluded from amounts on which the net Connecticut minimum tax is based in the case of individual, trusts and estates required to pay the federal alternative minimum tax. Prospective purchasers of the Notes are advised to consult their own tax advisors regarding the State and local tax consequences of ownership and disposition of, or receipt of interest on, the Notes.

### **DOCUMENTS ACCOMPANYING DELIVERY OF THE NOTES**

Upon delivery of the Notes, the original purchaser(s) will be furnished with the following:

1. A Signature and No Litigation Certificate stating that at the time of delivery no litigation is pending or threatened affecting the validity of the Notes or the levy or collection of taxes to pay them;

2. A certificate on behalf of the City, signed by the Mayor and Director of Administration, which will be dated the date of delivery and attached to a signed copy of the Official Statement, and which will certify to the best of said officials' knowledge and belief, at the time bids were accepted on the Notes, the descriptions and statements in the Official Statement relating to the City of Stamford and its finances were true and correct in all material respects and did not contain any untrue statement of a material fact or omit to state a material fact necessary to make the statement therein, in the light of the circumstances under which they were made, not misleading, and that there has been no material adverse change in the financial condition of the City from that set forth in or contemplated by the Official Statement;
3. A receipt for the purchase price of the Notes;
4. The approving opinion of Robinson & Cole LLP, Bond Counsel;
5. An executed continuing disclosure agreement in substantially the form of Appendix C to the Official Statement.
6. The City of Stamford has prepared an Official Statement for the Notes which is dated May 25, 2000. The City deems such Official Statement final as of its date for purposes of SEC Rule 15c-12(b)(1), but it is subject to revision or amendment. The City will make available to the winning purchaser 5 copies of the Official Statement within seven business days of the bid opening at the office of the City's Financial Advisor. If the City's Financial Advisor is provided with the necessary information from the winning purchaser by noon of the day following the day bids on the Notes are received, the copies of the Official Statement will include an additional cover page and other pages indicating the interest rates, ratings, yields or reoffering prices, the name of the managing underwriter, and any changes on the Notes. The purchaser shall arrange with the Financial Advisor the method of delivery of the copies of the Official Statement to the purchaser. Additional copies of the Official Statement may be obtained by the purchaser as its own expense by arrangement with the printer.

### **ADDITIONAL INFORMATION**

Additional information may be obtained upon request from the Director of Administration, City of Stamford, Government Center, 888 Washington Boulevard, Stamford, Connecticut 06904-2152, telephone (203) 977-4182 or from Public Financial Management, Inc., Boston, Massachusetts telephone (617) 330-6914.

The City has retained Public Financial Management, Inc., Boston, Massachusetts (the "Financial Advisor") in connection with the preparation of the City's issuance of the Notes. The Financial Advisor is not obligated to undertake, and has not undertaken to make, an independent verification or to assume responsibility for the accuracy, completeness, or fairness of the information contained in the Official Statement. Public Financial Management Inc. is an independent advisory firm and is not engaged in the business of underwriting, trading, or distributing municipal securities or other public securities.

The Official Statement is submitted in connection with the sale of the Notes and may not be reproduced or used in whole or in part for any other purpose. This Official Statement has been duly authorized and approved by the City and duly executed and delivered on its behalf by the City.

Any statements in this Official Statement involving matters of opinion or estimates, whether or not expressly so stated, are intended as such and not as representations of fact. No representation is made that any such statements will be realized. This Official Statement is not to be construed as a contract or agreement between the City and the purchasers or holders of any of the Notes.

The Official Statement has been duly prepared and delivered by the City, and executed for and on behalf of the City by the following officials:

**CITY OF STAMFORD**

By \_\_\_\_\_  
**Dannel P. Malloy**  
*Mayor*

By \_\_\_\_\_  
**Thomas S. Hamilton**  
*Director of Administration*

**Dated:** \_\_\_\_\_, 2000